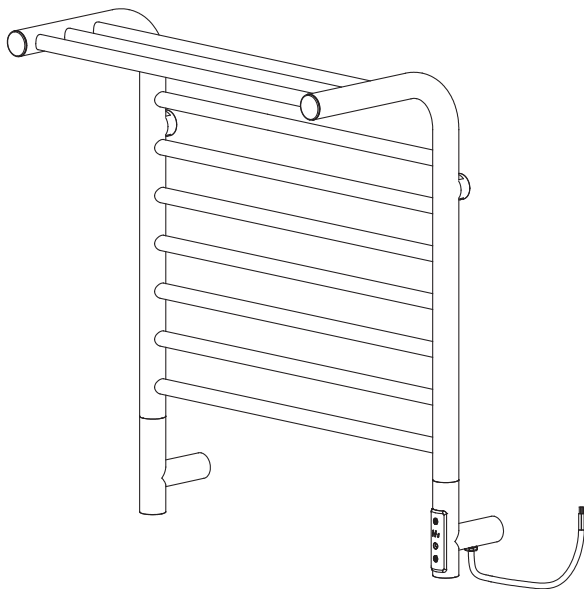


EN Electric towel warmer L shape

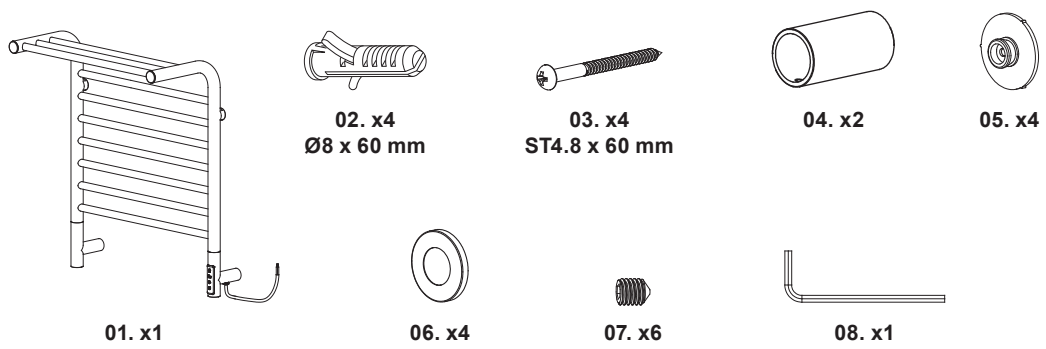


EN IMPORTANT - These instructions are for your safety. Please read through them thoroughly prior to handling the product and retain them for future reference. This product is only suitable for well insulated spaces or occasional use.

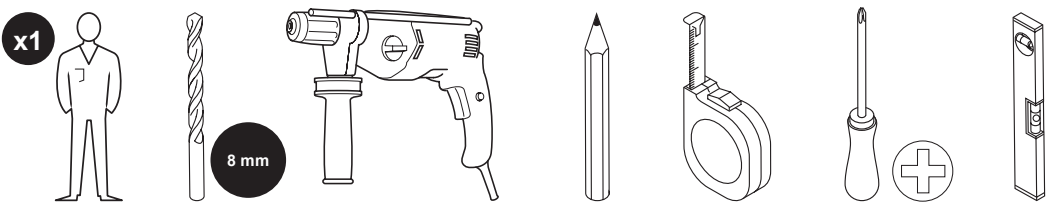
V10624_5059340990477_MAND2_2324

5059340990477

EN Parts



EN You will need



EN Contents

Safety	3
Guarantee	10
Preparation	11
Installation	11
Use	15
Care & maintenance	18



EN

Before you start

- Read these important instructions carefully before using the appliance.
- Keep these instructions during all the appliance's lifespan for future reference.
- Always give these instructions to anyone who will use the appliance, even if it's transferred to a third party.
- An appliance with a rating power < 300 W cannot be considered as sufficient for a room heating.
- Please always refer to instructions for precautions intended to user cleaning, maintenance, installation and fixing the appliance to its support.

Safety

- Failure to observe safety instructions can cause potential injuries or property damage (Electric shock, burns, fire, ...).
- Instructions are intended to protect your health and health of others, but also prevent potential damage to the appliance.
- This appliance is only intended to hold, warm and dry water-soaked textile towels in a domestic application and under no circumstances in a commercial or industrial professional setting.



DANGER:

**PARTICULAR
ATTENTION SHALL
BE GIVEN FOR
THE APPLIANCE
INSTALLATION
REGARDING TO
WATER PROJECTION
PROTECTION AS
SPECIFIED IN THE
INSTALLATION
CHAPTER AND
TECHNICAL
SPECIFICATIONS.**

- Please refer to appliance symbols explanations inside this instruction manual.



WARNING: IN ORDER TO AVOID A HAZARD FOR VERY YOUNG CHILDREN, THIS APPLIANCE SHOULD BE INSTALLED SO THAT THE LOWEST HEATED RAIL IS AT LEAST 600 MM ABOVE THE FLOOR.

- The appliance is to be installed so that switches and other controls cannot be touched by a person in the bath or shower.
- This appliance is designed to be vertically wall mounted on a flat wall using fixing parts supplied.
- Minimum spaces between the appliance and surrounding structures shall be observed, please refer to the installation schemes.



WARNING: THE WALL SHALL BE STRUCTURALLY SOUND WITH A MATERIAL CAPABLE OF WITHSTANDING APPLIANCE WEIGHT AND MODERATE HEAT LIKE:

- Finished plaster
- Dry-lined plaster board
- Conventional wallpaper
- Brick wall, etc ...

- Always check wall or wall coating thermal resistance before installation.
- Some wall materials are sensitive to heat and shall be avoided:
 - Flocking
 - Blown vinyl
 - Embossed paper
 - Cloth wall covering, etc...
- Some discoloration may occur in time according to wall materials, air impurities and appliance use frequency.
- Please contact a qualified professional electrician if assistance is needed about the installation.
- The heater must not be located immediately below a socket outlet.
- Using of adhesives as fixing method is prohibited as they are not considered to be a reliable fixing means.



WARNING: TO REDUCE THE RISK OF FIRE, KEEP TEXTILES, CURTAINS, OR ANY OTHER FLAMMABLE MATERIAL A MINIMUM DISTANCE OF 1 M FROM THE AIR OUTLET.

- The appliance is to be supplied through a residual current device (RCD) having a rated residual operating current not exceeding 30 mA.



CAUTION: DO NOT BEND, CRUSH OR PINCH THE ELECTRIC SUPPLY CORD BEHIND THE APPLIANCE. LEAVE ENOUGH SPACE BEHIND THE APPLIANCE SO THAT IT IS NOT IN DIRECT CONTACT WITH THE FIXED ELECTRIC WIRING SYSTEM.

- When installing the appliance, make sure the appliance is positioned in a way that ensures its heated parts are not in direct contact with the fixed electric wiring system. If it does, the fixed wiring insulation must be protected, for example, by an insulating sleeving having an appropriate temperature rating. Please contact a qualified professional electrician if assistance is needed about the fixed electric wiring insulation.

- The appliance must not be connected via an extension cable or a power strip.



DANGER: NEVER CONNECT / DISCONNECT THE APPLIANCE WITH WET HANDS, RISK OF ELECTRIC SHOCK.

- If the appliance is fitted with an electric supply cord with a power plug, this one must remain accessible or a switch must be installed in the fixed electric wiring system in accordance with the national electric installation rules so that the appliance can be disconnected from the electric power supply network whatever the circumstances.
- If the appliance is not fitted with an electric supply cord with a power plug, only the above second solution must be applied.



CAUTION: BEFORE ACCESSING THE CONNECTION TERMINALS, ALL ELECTRIC SUPPLY CIRCUITS MUST BE DISCONNECTED.

- Please ensure that the appliance rated power is lower than the power managed by your home installation socket outlet.



WARNING: IF THE POWER CABLE BECOMES VERY HOT, IT MEANS YOUR HOME INSTALLATION IS NOT ABLE TO MANAGE THE APPLIANCE RATED POWER. PUT THE APPLIANCE TO STAND-BY MODE, UNPLUG IT AND CHECK YOUR ELECTRIC INSTALLATION WITH A QUALIFIED ELECTRICIAN BEFORE TO RE-USE THE APPLIANCE.

- If the appliance has a power plug with earthing included or an electric power cord including earthing with yellow / green colour, the fixed electrical installation must also have an earth connection to ensure the minimum protection level.



CAUTION: IN ORDER TO AVOID A HAZARD DUE TO INADVERTENT RESETTING OF THE THERMAL CUT-OUT, THIS APPLIANCE MUST NOT BE SUPPLIED THROUGH AN EXTERNAL SWITCHING DEVICE, SUCH AS A TIMER, OR CONNECTED TO A CIRCUIT THAT IS REGULARLY SWITCHED ON AND OFF BY THE UTILITY.



DANGER: NEVER USE THIS APPLIANCE OUTSIDE.



WARNING: KEEP PACKAGING MATERIALS AND ACCESSORIES OUT OF THE REACH OF CHILDREN. NEVER ALLOW CHILDREN TO PLAY WITH PACKAGING OR ACCESSORIES.

- Children of less than 3 years should be kept away unless continuously supervised.
- Children aged from 3 years and less than 8 years shall only switch on/off the appliance provided that it has been placed or installed in its intended normal operating position and they have been given supervision or instruction concerning use of the appliance in a safe way and understand the hazards involved.
- Children aged from 3 years and less than 8 years shall not plug in, regulate and clean the appliance or perform user maintenance.
- This appliance can be used by children aged from 8 years and above and persons with reduced physical, sensory or mental capabilities or lack of experience and knowledge if they have been given supervision or instruction concerning use of the appliance in a safe way and understand the hazards involved.
- Children shall not play with the appliance.
- Cleaning and user maintenance shall not be made by children without supervision.



WARNING: DO NOT USE THIS HEATER IN SMALL ROOMS WHEN THEY ARE OCCUPIED BY PERSONS NOT CAPABLE OF LEAVING THE ROOM ON THEIR OWN, UNLESS CONSTANT SUPERVISION IS PROVIDED.



CAUTION: SOME PARTS OF THIS PRODUCT CAN BECOME VERY HOT AND CAUSE BURNS. PARTICULAR ATTENTION HAS TO BE GIVEN WHERE CHILDREN AND VULNERABLE PEOPLE ARE PRESENT.

- Do not use this heater if it has been dropped.
- Do not use if there are visible signs of damage to the heater.
- If the supply cord is damaged, it must be replaced by the manufacturer, its service agent or similarly qualified persons in order to avoid a hazard.



CAUTION: ANY PRODUCT INTERVENTION AND / OR REPAIR BY THE USER OR A NON-PROFESSIONAL THIRD PARTY MAY JEOPARDIZE THE SAFETY OF PERSONS AND PROPERTY. SO, DO NOT ATTEMPT TO DISASSEMBLE THIS APPLIANCE, REPAIR IT OR PERFORM ANY MODIFICATIONS BY YOURSELF.



WARNING: DEFECTS AND THEIR CONSEQUENCES RESULTING FROM PRODUCT INTERVENTIONS AND / OR REPAIRS CARRIED OUT BY THE USER OR A NON-PROFESSIONAL THIRD PARTY CANNOT GIVE RISE TO THE APPLICATION OF THE LEGAL OR COMMERCIAL WARRANTY.




CAUTION: THE MANUFACTURER CANNOT BE HELD RESPONSIBLE FOR DAMAGE OCCURRING DURING SELF-REPAIR INSOFAR AS THIS DAMAGE IS LINKED IN PARTICULAR TO USER ERROR OR NON-COMPLIANCE BY THE LATTER WITH THE PRODUCT REPAIR INSTRUCTIONS.

Only for France, United Kingdom & Ireland





WARNING: RISK OF ELECTRIC SHOCK AND FIRE! THE FOLLOWING OPERATIONS SHALL BE PROCEEDED BY A QUALIFIED PROFESSIONAL ELECTRICIAN IF YOU HAVE NO SUFFICIENT ELECTRICAL KNOWLEDGE.

- The supply cord shall be safely connected to the supply mains terminals with the help of a quick lever electrical connection terminal block (not supplied).



CAUTION: THE USE OF AN ELECTRIC CONNECTION TERMINAL BLOCK TO SCREW (DOMINO) IS NOT CONSIDERED AS A SAFE CONNECTION METHOD ANYMORE.



- These indicative codes and colours have to correspond to the supply mains terminals and wires in your electric supply mains.
- The appliance is equipped with a supply cord including these colours codifications:
 - Blue wire = Neutral = N
 - Brown wire = Live = L
 - Yellow-green wire = Earth =  or E or PE






DANGER: ALWAYS ENSURE THE CORRESPONDENCE BETWEEN THE APPLIANCE SUPPLY CORD ELECTRIC WIRES AND YOUR ELECTRIC SUPPLY MAINS TERMINALS AND WIRES, COLOURS CODES MAY DIFFER ACCORDING TO COUNTRIES AND THE BUILDING CONSTRUCTION YEAR.

Technical specifications

Model	PD640540C
Electric specifications	220-240 V~ 50 Hz
Electric protection class	Class I (Must be connected to a socket with grounding)
Ingress protection code (IP)	IP24 (Protection against splashing / sprays of waters on the casing)
Overall dimension	H 660 x W 540
Rated power	250 W
Operating range in °C	0-50 °C
Manufacturing country	P.R.C.

	This product complies with conformity requirements of the applicable European Regulations or Directives.
	This product complies with conformity requirements of the applicable UK Regulations.

	This symbol is known as the 'Crossed-out Wheelie Bin Symbol'. When this symbol is marked on a product or battery, it means that it should not be disposed of with your general household waste. Some chemicals contained within electrical / electronic products or batteries can be harmful to health and the environment. Only dispose of electrical/electronic/battery items in separate collection schemes, which cater for the recovery and recycling of materials contained within. Your co-operation is vital to ensure the success of these schemes and for the protection of the environment.
	The appliance power supply current is alternating type.
	Read the instructions

Recycling and disposal

Please respect national and local regulations to reduce the environmental impact of your purchase.

An electric and electronic appliance shall not be sorted or recycled with other household waste.

You are legally responsible for sorting the product (Including any accessories), its instructions(s) and its packaging elements with a view to recycling.

Observe markings on the different packaging materials for waste separation.

There are abbreviations and numbers for the nature of content.

- a: Abbreviations
- b: Numbers: 1 to 7: Plastics / 20 to 22: Papers and fibreboards / 80 to 98: Composite materials

Information on collection points and their opening hours can be obtained from your local authority.

Never leave used products and packaging elements available to children as they represent a danger.

Guarantee

We take special care to select high quality materials and use manufacturing techniques that allow us to create products incorporating design and durability. This product has a manufacturer's guarantee of 2 years against manufacturing defects, from the date of purchase (if bought in store) or date of delivery (if bought online), at no additional cost for normal (non-professional or commercial) household use.

To make a claim under this guarantee, you must present your proof of purchase (such as a sales receipt, purchase invoice or other evidence admissible under applicable law), please keep your proof of purchase in a safe place. For this guarantee to apply, the product you purchased must be new, it will not apply to second hand or display products. Unless stated otherwise by applicable law, any replacement product issued under this guarantee will only be guaranteed until expiry of the original period guarantee period.

This guarantee covers product failures and malfunctions provided the product was used for the purpose for which it is intended and subject to installation, cleaning, care and maintenance in accordance with the information contained in these terms and conditions, in the user manual and standard practice, provided that standard practice does not conflict with the user manual.

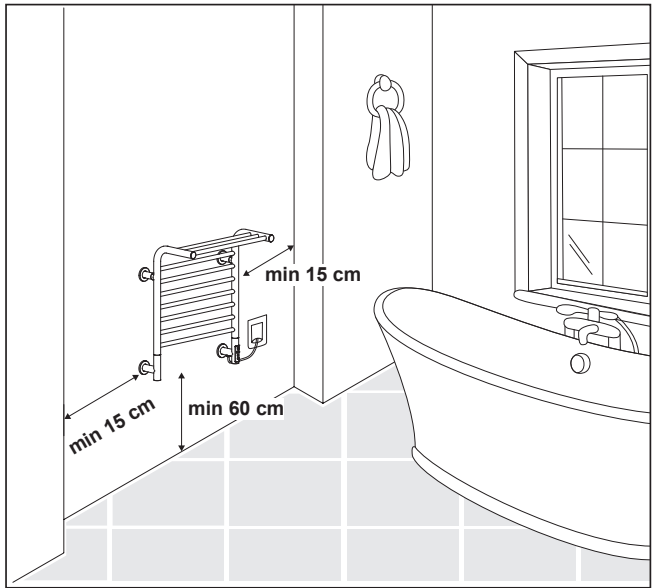
This guarantee does not cover defects and damage caused by normal wear and tear or damage that could be the result of improper use, faulty installation or assembly, neglect, accident, misuse, or modification of the product. Unless stated otherwise by applicable law, this guarantee will not cover, in any case, ancillary costs (shipping, movement, costs of uninstalling and reinstalling, labour etc), or direct and indirect damage.

If the product is defective, we will, within a reasonable time, refund.

Rights under this guarantee are enforceable in the country in which you purchased this product. Guarantee related queries should be addressed to the store you purchased this product from.

The guarantee is in addition to and does not affect your statutory rights.

EN Preparation

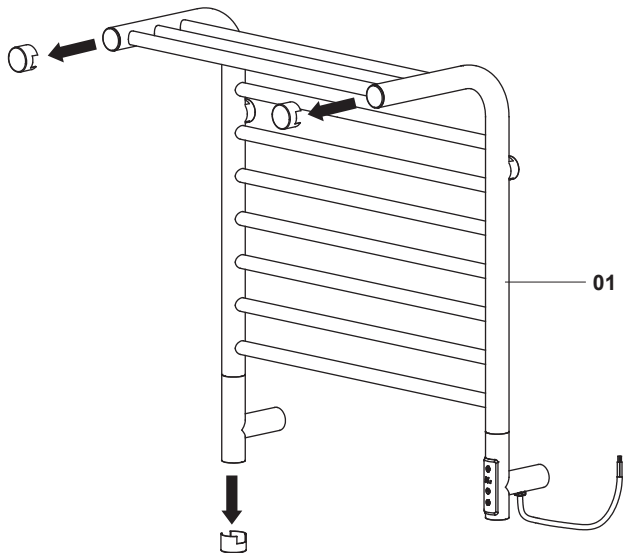


EN Installation

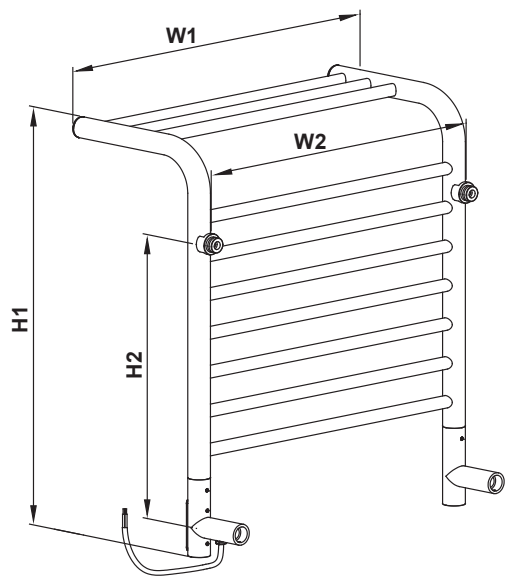
01



01. x1



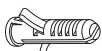
02



W1 (mm)	W2 (mm)
540	508

H1 (mm)	H2 (mm)
660	459

03



02. x4
Ø8 x 64 mm



03. x4
ST4.8 x 60 mm



04. x2



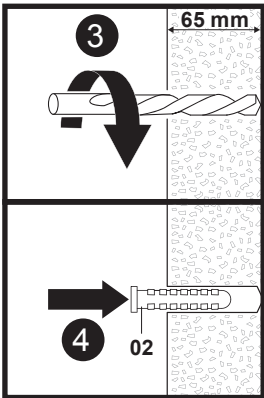
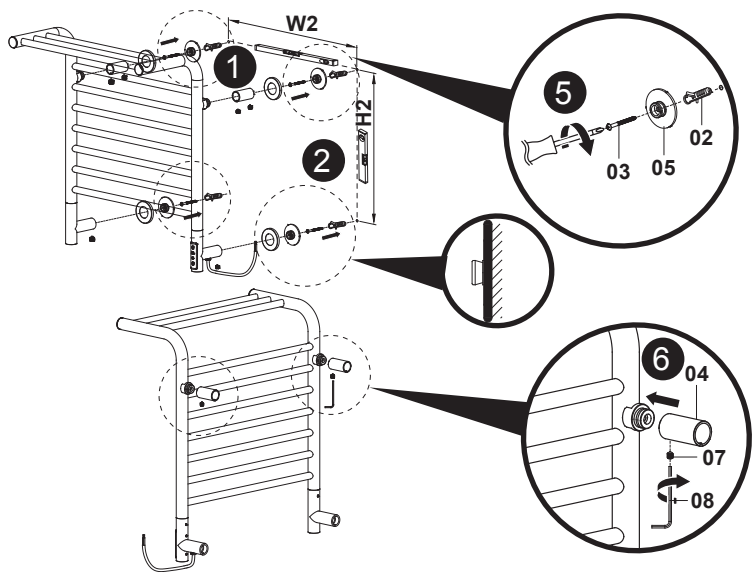
05. x4



07. x2



08. x1



04



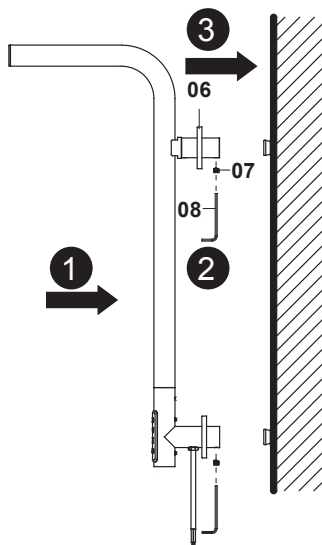
06. x4



07. x4



08. x1



DANGER: RISK OF APPLIANCE UNHOOKING! THE WALL MOUNT FASTENERS (PLASTIC PLUGS AND METAL SCREWS) INCLUDED WITH THE APPLIANCE ARE ONLY SCHEDULED FOR AN INSTALLATION ON A CONCRETE WALL.



WARNING: FOR WOOD WALLS, CINDER BLOCKS, PLASTERBOARD OR OTHER WALL TYPES, CONSULT A PROFESSIONAL TO KNOW WHAT IS THE BEST ATTACHMENT METHOD AS THE SUPPLIED WALL MOUNT FASTENERS WILL NOT BE SUITABLE.

NOTE: A sheet or equivalent soft textile can be placed under the appliance to avoid scratching or damaging it during assembly.



WARNING: RISK OF SCREWS HEADS DAMAGE! THE USE OF AN ELECTRIC SCREWDRIVER IS NOT RECOMMENDED.



CAUTION: ALWAYS CHECK THE APPLIANCE WILL BE CORRECTLY INSTALLED USING A LEVEL.

When using the appliance for the first time or after a long period of inactivity, there may be trace of odour during few minutes that will quickly disappear, that's not an abnormal situation.

Installation area in protection volumes



CAUTION: RISK OF ELECTRIC SHOCK! ALWAYS CHECK THE APPLIANCE TECHNICAL SPECIFICATIONS BEFORE WALL MOUNTING INSTALLATION AND USE.

In a bathroom or a water room, different areas depending on the quantity of water or steam present are distinguished.

These areas determine the installation of wall mounted electrical appliances. Volumes are divided between:

- Volume 0: Water receiving area
- Volume 1: Volume 0 + Up to a height of 2.25 m above the ground. For Italian showers: 1.2 m radius length from the showerhead.
- Volume 2: Volume 1 + Add 0 to 60 cm length out of the receiver. No height change. For Italian showers: Add 60 cm to the radius length.
- Out of volume / Volume 3: Length above volume 2. Height above volume 1.

Only for France & Spain:

This appliance shall be fully installed only in out of protection area, scheme: 3 / X

The appliance is not equipped with an electric plug and must not be connected through an electric plug.

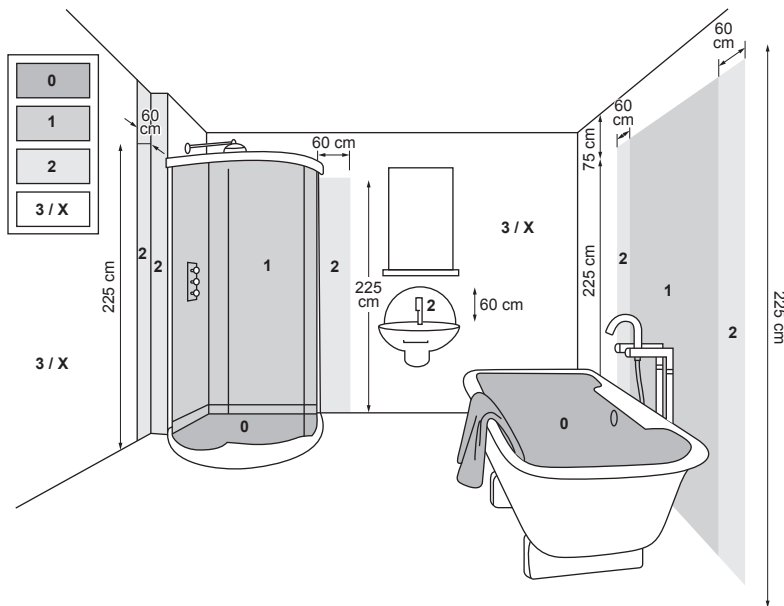
Only for Ireland & United Kingdom:

This appliance shall be fully installed only in out of protection area, scheme: 3 / X

The appliance is not equipped with an electric plug and must not be connected through an electric plug for a bathroom installation.

Only for Poland, Portugal, Romania, Spain, Turkey:

This appliance shall be installed only in volume 2 or out of protection area areas, scheme: 2 + 3 / X

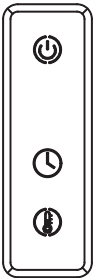




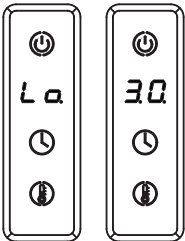
Symbol	Function
	Power button
	Timer: 0.5h - 9h
	Hi: 60 °C
	Lo: 45 °C

LCD display:

- Off mode: there will be no display.






- On mode: default as the same as the last use;



- Heating condition: if no operation in one minute during heating condition, the screen will turn off, only leaving “.” flashing.



	<p>On / Stand-by mode</p> <p>Short press the touch key to select on or stand-by mode</p> <p>The touch key is highlighted at 100% in on mode and 50% in stand-by mode</p> <p>When the appliance is in ON mode, long press 6 s the touch key to reset the appliance to factory settings.</p>
	<p>In on mode: Timer mode</p> <p>Short press the touch key to select the timer time (Working time limitation) from 0.5 (30 minutes) to 9.0 (9 hours). Setting can be made 30 mins by 30 mins. The default time is 2.0 (2 hours).</p> <p>If the timer time is modified, the new timer time is saved.</p> <p>When the timer is in operation, a countdown is visible on the digits and “.” is flashing after the digits.</p>
	<p>In on mode: Surface temperature</p> <p>Short press the touch key to select the temperature between Hi (High: 60 °C) and Lo (Low: 45 °C).</p> <p>The default surface temperature is Hi.</p> <p>If the temperature is modified, the new temperature is saved.</p> <p>When heating is in operation, the “.” Is flashing after the digits.</p> <p>In stand-by mode: Surface Temperature compensation</p> <p>Long press the touch key 5 s to access to the temperature compensation mode.</p> <p>0 is the default setting for 0 °C, you can adjust from -8 °C to +8 °C according to your room insulation.</p> <p>0->2->4->6->8->-8->-6->-4->-2->0</p>

Information requirements for electric local space heaters

Model identifier(s)	PD640540C		
Item	Symbol	Value	Unit
Heat output			
Nominal heat output	P_{nom}	0.250	kW
Minimum heat output (indicative)	P_{min}	N.A.	kW
Maximum continuous heat output	$P_{max}^* c$	0.250	kW
Auxiliary electricity consumption			
At nominal heat output	el_{max}	/	kW
At minimum heat output	el_{min}	/	kW
In standby mode	el_{SB}	/	kW

<i>Item</i>	<i>Unit</i>
Type of heat input, for electric storage local space heaters only	
Manual heat charge control, with integrated thermostat	/
Manual heat charge control with room and/or outdoor temperature feedback	/
Electronic heat charge control with room and/or outdoor temperature feedback	/
Fan assisted heat output	/
Type of heat output/room temperature control	
Single stage heat output and no room temperature control	<input type="checkbox"/>
Two or more manual stages, no room temperature control	<input type="checkbox"/>
With mechanic thermostat room temperature control	<input type="checkbox"/>
With electronic room temperature control	<input type="checkbox"/>
Electronic room temperature control plus day timer	<input type="checkbox"/>
Electronic room temperature control plus week timer	<input checked="" type="checkbox"/>
Other control options	
Room temperature control, with presence detection	<input type="checkbox"/>
Room temperature control, with open window detection	<input checked="" type="checkbox"/>
With distance control option	<input type="checkbox"/>
With adaptive start control	<input type="checkbox"/>
With working time limitation	<input checked="" type="checkbox"/>
With black bulb sensor	<input type="checkbox"/>
Contact details	Kingfisher International Products Limited, 1 Paddington Square, London, W2 1GG, United Kingdom Kingfisher International Products B.V., Rapenburgerstraat 175E, 1011 VM Amsterdam, The Netherlands www.kingfisher.com/products
	<input checked="" type="checkbox"/> : Yes / <input type="checkbox"/> : No

Troubleshooting

Operation of your appliance can lead to errors and malfunctions. The following tables contain possible causes and tips to resolve them. Please consult this table before to contact after sales service.

Trouble	Possible causes	Solution
The appliance is not powered on.	The appliance is not correctly connected to the electric mains.	Connect the appliance to the electric mains including a earth connection.
		Check the connection is firmly made.
		Check the power cord is not trapped, bended, crushed, pinched or damaged.
	Overheat protection has been triggered.	An overheat safety is included inside the appliance. Ensure installation and use are correctly respected, then disconnect the appliance, let it cool down at least half of an hour before to connect it again.
The appliance suddenly stops during heating.	The appliance stops heating after reaching the heating temperature set.	No abnormal situation. If the heating stops too frequently according to your heating needs, set the temperature thermostat higher.

EN Care & maintenance

- Any intervention linked to the appliance cleaning, servicing or maintenance must be carried out with the appliance disconnected from the electric mains and cool down.
- Clean regularly the appliance, every quarter maximum, with a soft non-abrasive dust cloth microfiber type.
- If stains are visible, the cloth can be slightly humidified.
- Do not put the appliance in contact with water and do not wash it.



WARNING: NEVER USE ABRASIVE OR CORROSIVE DETERGENT, CHEMICAL AGENTS OR SOLVENTS AS THEY COULD DAMAGE THE MATERIALS AND COATINGS, ESPECIALLY PLASTIC PARTS.

- Do not use a steam cleaner when cleaning the appliance.

Manufacturer:

UK Manufacturer:

Kingfisher International Products Limited,
1 Paddington Square, London, W2 1GG,
United Kingdom

EU Manufacturer:

Kingfisher International Products B.V.,
Rapenburgerstraat 175E,
1011 VM Amsterdam,
The Netherlands

EN www.diy.com

www.screwfix.com

www.screwfix.ie

**To view instruction manuals online,
visit www.kingfisher.com/products**