

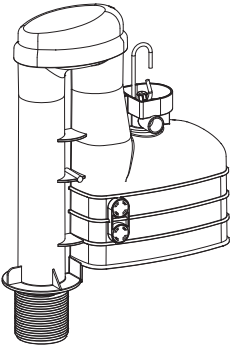
EN Dual Flush Siphon Standard and Compact

EN IMPORTANT - These instructions are for your safety. Please read through them thoroughly prior to handling the product and retain them for future reference.

V11223_5059340756745_MAND1_2223

5059340756745
5059340757025
5059340756974
5059340756738

EN Parts



01. x1



02. x1



03. x1



04. x1

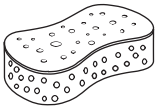
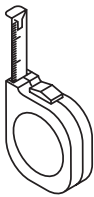
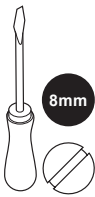


05. x1



06. x1

EN You will need



EN Contents

EN	
Safety	3
Guarantee	5
Preparation	6
Assembly	7
Care & maintenance	9



EN Safety

EN

Before you start

- Ensure that this product is suitable for the installation you have, and that all component listed are provided before starting the installation.
- This instruction manual covers the Dual Flush Syphon 9" / Dual Flush compact Syphon 10".
- Don't rush. Read the instructions first and familiarise yourself with the sequence before you begin, as some aspects of this installation may differ from other products on the market.
- Ensure water supply to the cistern is isolated before beginning works and drain as much water from your cistern to avoid water damage to your property.
- Failure to follow these instructions may result in personal injury, damage to your property, damage to the product and loss of guarantee.

Safety

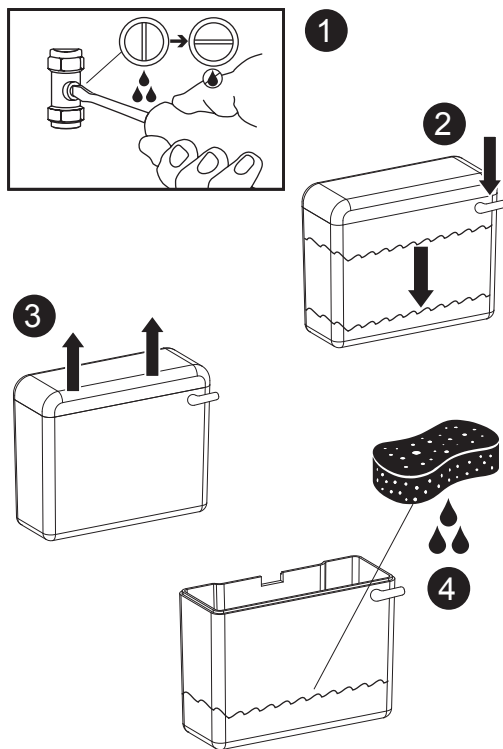
- Make sure that water supply to your cistern has been isolated correctly and that the system is drained as much as possible to avoid any water damage to your property.
- Do not use sealing compounds when installing this product as damage over time may occur to the plastic components causing leaks.
- Do not over-tighten components as damage over time may occur.
- Do not add any Chemicals (e.g. Disinfectant Tablets/Bleaches etc) into the cistern water.
- The product, its components and packaging are not toys and should be kept out of the reach of children.
- If you are a DIYer and have limited experience with plumbed water systems, it is always good to contact a professional for guidance.

Removal of existing valves

If this is a new installation and you have no existing valves in your cistern, move straight onto step 1 of the installation.

If you have a valve already installed, please follow the below guide to help with the removal. Please note that these steps are for common installations. If you have difficulty following or the steps do not cover your specific installation, you may wish to contact a plumber for further guidance.

- Begin by isolating the water supply to the cistern.
- Drain the water from the cistern by flushing the toilet.
- Remove the lid of the cistern.
- Remove all excess water from the cistern with a sponge.
- Also remove the water supply connection from the fill valve shank.

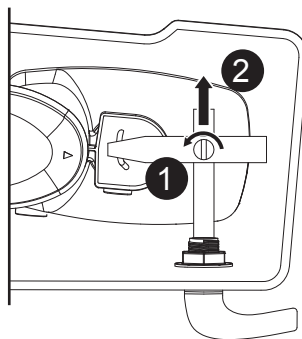
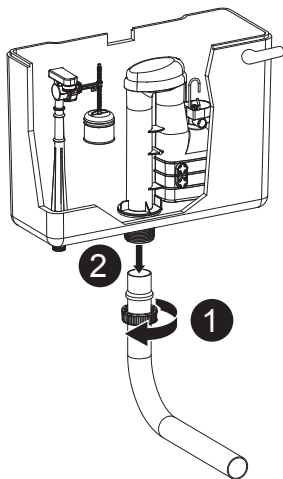


NOTE: Have a bucket to hand to catch any water that may come from the cistern during the above steps.

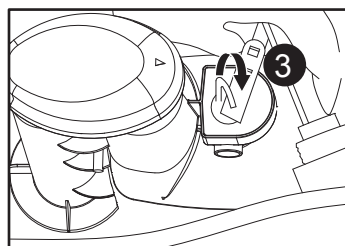
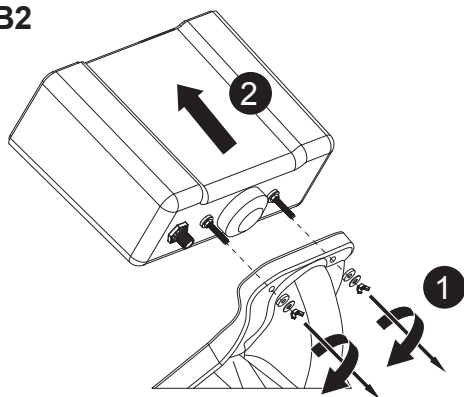
Depending on your type of installation, you may have a high or low-level cistern connecting to the pan via a flush pipe [B1].

Or you could have a closed coupling cistern where the cistern and pan are connected with a doughnut seal and bolts [B2]. Follow the steps B1 or B2 on how to remove the cistern safely, depending on your installation.

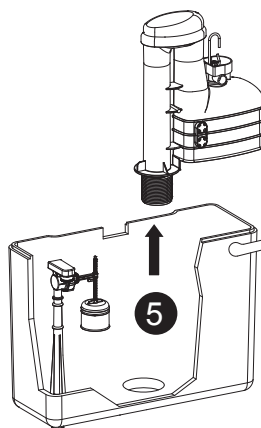
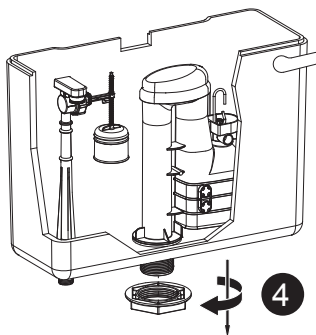
B1



B2



- With the cisterns now drained and disconnected from the pan, you can start to remove the old flush valve.
- First remove the flush lever from the syphon C-linkage. Make sure to keep the handle and level safe as these will need to be used with the new syphon.
- Remove the backing nut for the syphon from the underside of the cistern and remove the syphon and dispose of correctly.
- Clean all debris from the inside of the cistern including any existing seals/washers that came with the old syphon.



Guarantee

We take special care to select high quality materials and use manufacturing techniques that allow us to create products incorporating design and durability. This product has a manufacturer's guarantee of 10 years against manufacturing defects, from the date of purchase (if bought in store) or date of delivery (if bought online), at no additional cost for normal (non-professional or commercial) household use.

To make a claim under this guarantee, you must present your proof of purchase (such as a sales receipt, purchase invoice or other evidence admissible under applicable law), please keep your proof of purchase in a safe place. For this guarantee to apply, the product you purchased must be new, it will not apply to second hand or display products. Unless stated otherwise by applicable law, any replacement product issued under this guarantee will only be guaranteed until expiry of the original period guarantee period.

This guarantee covers product failures and malfunctions provided the product was used for the purpose for which it is intended and subject to installation, cleaning, care and maintenance in accordance with the information contained in these terms and conditions, in the user manual and standard practice, provided that standard practice does not conflict with the user manual.

This guarantee does not cover defects and damage caused by normal wear and tear or damage that could be the result of improper use, faulty installation or assembly, neglect, accident, misuse, or modification of the product. Unless stated otherwise by applicable law, this guarantee will not cover, in any case, ancillary costs (shipping, movement, costs of uninstalling and reinstalling, labour etc), or direct and indirect damage.

The guarantee excludes diaphragms and seals.

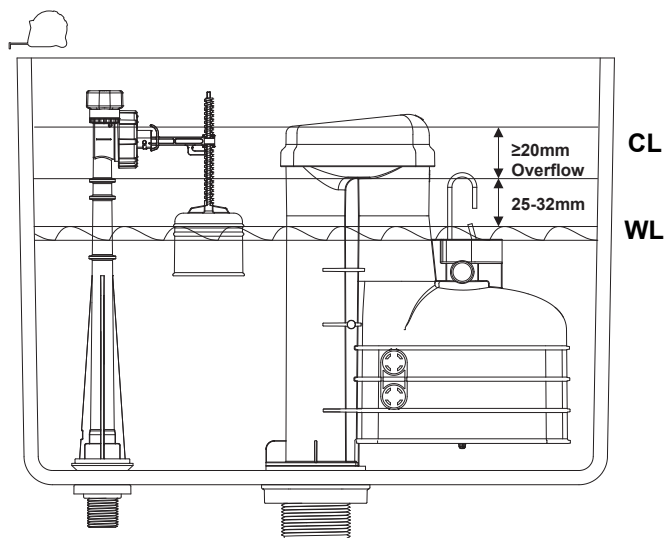
If the product is defective, we will, within a reasonable time, replace or refund.

Rights under this guarantee are enforceable in the country in which you purchased this product. Guarantee related queries should be addressed to the store you purchased this product from.

The guarantee is in addition to and does not affect your statutory rights.

**IMPORTANT - RETAIN
THIS INFORMATION
FOR FUTURE
REFERENCE:
READ CAREFULLY**

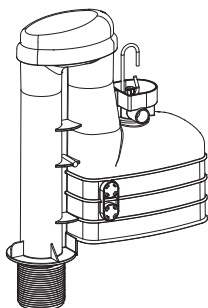
Information



NOTE: Once installed, the valve's critical level (as shown on the image above "CL") should be around 20 mm above the height of the syphon overflow (middle line between "CL" and "WL") or 45 to 52 mm above the water level ("WL").

If the selected syphon is correct, and identical to the existing syphon, there should be no need to make any adjustments to the fill valve water level.

If the new syphon is larger or smaller, the fill valve will likely need to be adjusted to get the water level correct in respect to the overflow and critical level of the two products. Please refer to the manufacturer of the fill valve for its instruction on water level adjustment.



6L	7L	9L
<input type="radio"/>	<input checked="" type="radio"/>	<input checked="" type="radio"/>
<input checked="" type="radio"/>	<input type="radio"/>	<input checked="" type="radio"/>
●	●●	●●● *

These syphons are supplied with full flush water volume adjustment and half-flush feature for water saving.

To activate the half-flush feature, simply depress and hold the level down when flushing, and the syphon will displace a lower volume of water.

To adjust the full flush valve (conventional depress and realise of flush handle), remove the rubber stops from the side of the syphon in accordance with the table above.

*Black dot signifies stop is fitted.

01



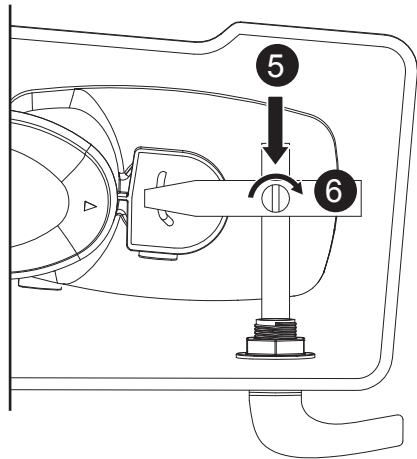
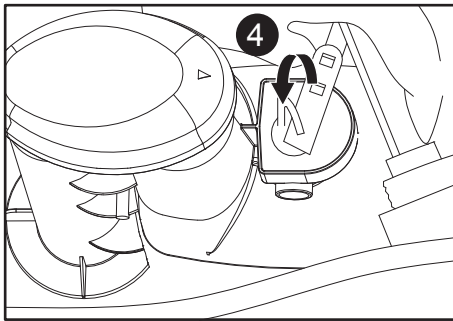
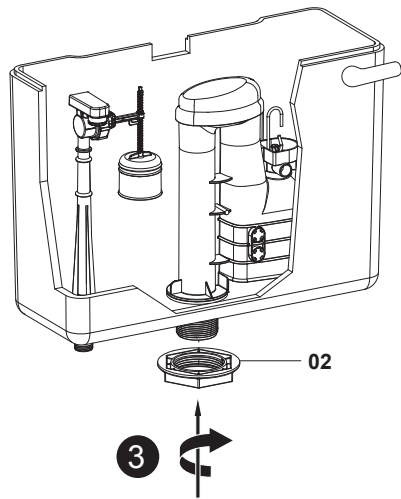
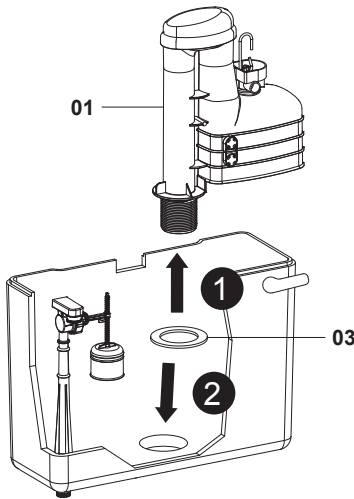
01. x1



02. x1



03. x1



Fit the new flush valve (01) into the cistern hole and make sure it is not in contact with the cistern wall or any other components already installed in your cistern.

Ensure Seal (03) is fitted internally to create a water seal between the syphon and the cistern.

Fit and secure the backing nut to the underside of the cistern. Use a spanner to tighten the nut firmly, but do not over tighten.

With the syphon fitted, connect the flush lever to the new C-linkage and secure this back to the flush handle as shown.

02



04. x1

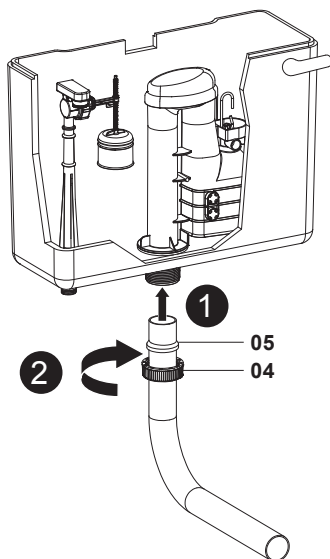


05. x1

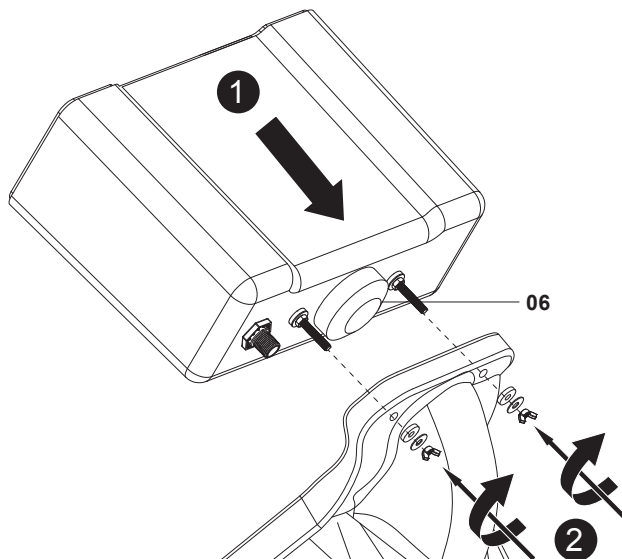


06. x1

B1



B2

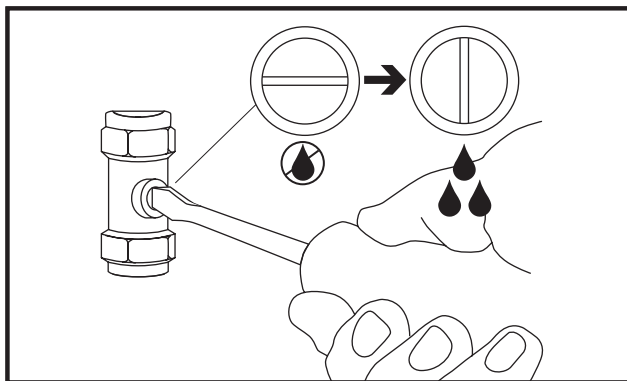


Depending on the cistern arrangement, follow guidance on B1 or B2 to fit the cistern to the flush pipe or pan respectively.

NOTE:

[B1] We supply a new compression seal (05) and nut (04) for standard 38 mm flush pipes within our kit.

[B2] Our syphon is supplied with a larger backing nut (02) than standard to make it compatible with our spanner accessory. This means the doughnut seal is not the conventional size. To avoid additional trips to store, we have provided the correct doughnut seal (06) to fit with the nut correctly.



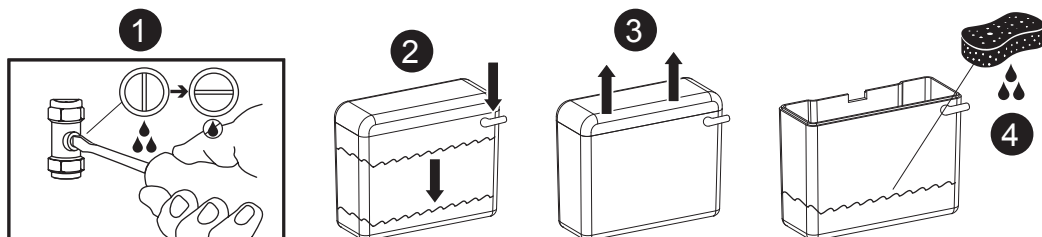
Connect the water supply back to the fill valve and turn water supply on. Check for any leaks and test that the syphon flushes correctly and with the desired volume. For more information on adjusting the volume and flush settings available, view the Information sheet towards the beginning of this instruction manual.

EN Care & maintenance

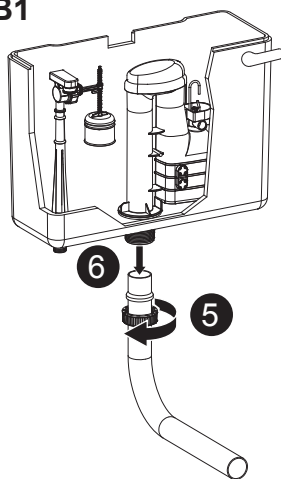
During the life of the product there may be a need to perform maintenance on the syphon diaphragm. This will be clear to the user as the valve will not flush at all after depressing the handle repeatedly.

To replace the diaphragm please follow the instruction steps below.

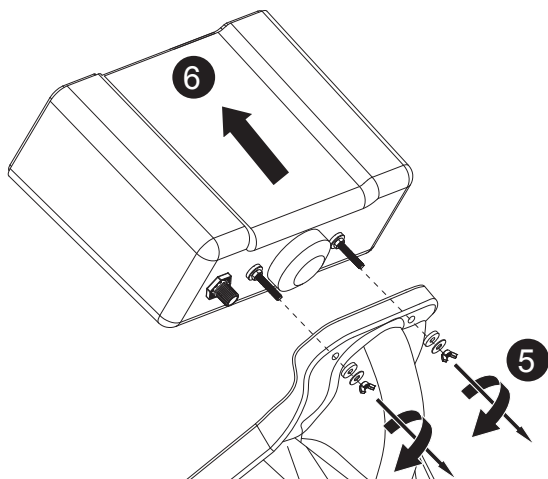
01



B1

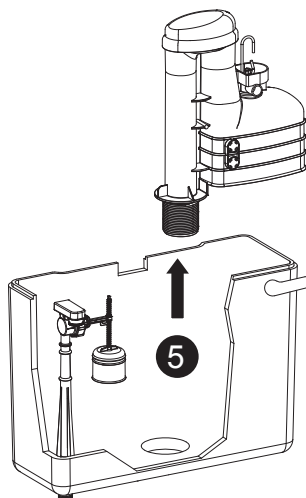
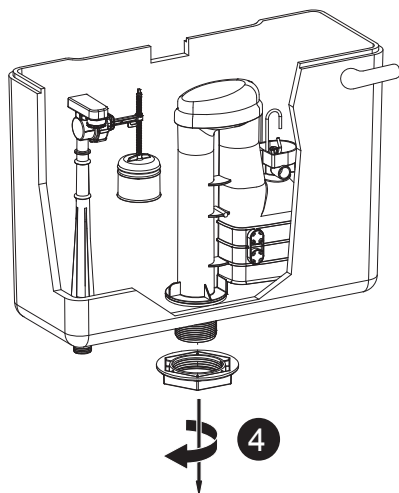
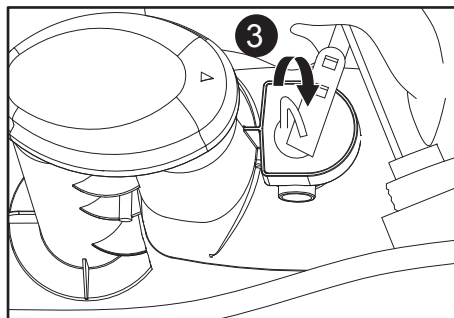
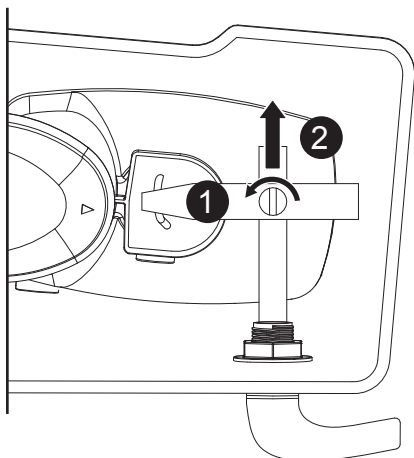


B2



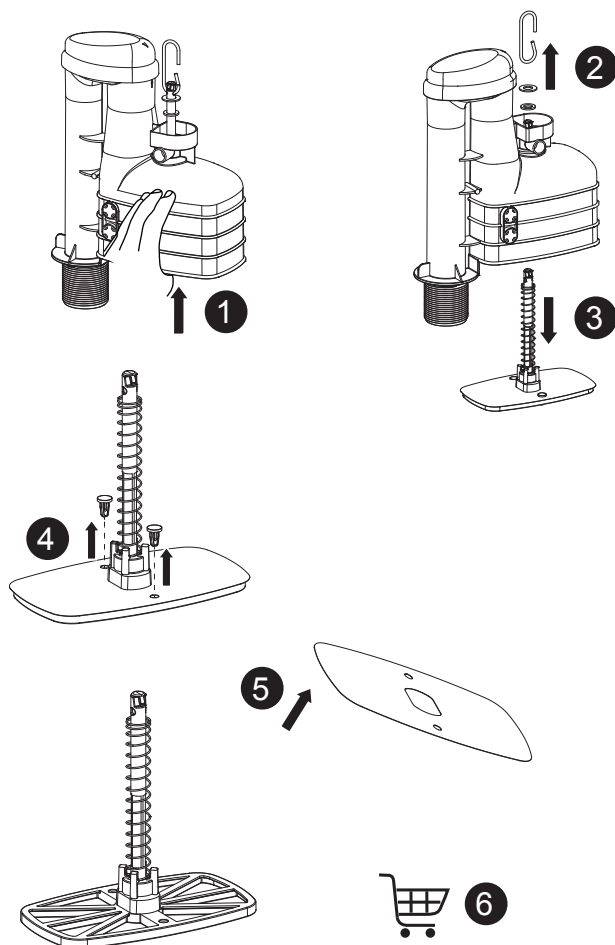
- Begin by isolating the water supply to the cistern.
- Drain the water from the cistern by flushing the toilet.
- Remove the lid of the cistern.
- Remove all excess water from the cistern with a sponge.
- Also remove the water supply connection from the fill valve shank.
- Depending on your type of installation, you may have a high or low-level cistern connecting to the pan via a flush pipe [B1]
- Or you could have a closed coupling cistern where the cistern and pan are connected with a doughnut seal and bolts [B2]. Follow the steps B1 or B2 on how to remove the cistern safely, depending on your installation.

02



- With the cisterns now drained and disconnected from the pan, you can remove the syphon.
- Remove the flush valve lever from the syphon C-linkage.
- Remove the backing nut for the syphon from the underside of the cistern.

03



To get access to the diaphragm follow the steps below and images above to help correctly remove the mechanism from the syphon body that holds the diaphragm in place.

- [1] Push the mechanism from the underside of the syphon to lift the shaft that hold the C-linkage.
- [2] Remove the C-link when the mechanism is lifted along with the washer and seal that are fitted to the shaft.
- [3] Removed the mechanism from the underside of the syphon. Take care when pulling this out as there is a spring attached that could be under compression.
- [4] Remove the split pins that hold the diaphragm in place.
- [5] Check the diaphragm for damage or debris. Clean and reassemble if undamaged.
- [6] If damaged, replace the diaphragm.

Follow all the steps above in reverse order to reassemble and install the valve back to working conditions.

Manufacturer:

UK Manufacturer:

Kingfisher International Products Limited,
1 Paddington Square, London, W2 1GG,
United Kingdom

EU Manufacturer:

Kingfisher International Products B.V.,
Rapenburgerstraat 175E,
1011 VM Amsterdam,
The Netherlands

EN www.diy.com

www.screwfix.com

www.screwfix.ie

**To view instruction manuals online,
visit www.kingfisher.com/products**