

Olivia Tabletop Burner

User Instructions

42770

Product Type: Bioethanol Burner

Fuel Type: Bioethanol Liquid (recommended $\geq 95\%$ Ethanol)

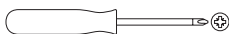
Net Weight: 5.8kg

Maximum Tank (Fuel Container) Capacity: 230ml

Burning Period: Approx. 1.6hours



Tools required (not included)



Do not fill fuel into the open flame.
Do not fill fuel into the hot burner.

These instructions form part of this appliance. Please be sure to read them before use and keep for future reference. This product is for domestic use only and should not be used commercially or for contract purposes.

Produced in PRC for The AMES Companies UK Ltd c/o La Hacienda

The Old Airfield, Heck & Pollington Lane, Pollington, East Yorkshire, DN14 0BA

www.lahacienda.co.uk Tel: 01285 762060

Produced in PRC for EU - True Temper Ltd. T23 AF84

Care and safe use guidelines

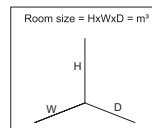
SAFETY INFORMATION

WARNINGS:

For decorative and domestic use only.

The construction of appliance shall not be changed or altered in any way; doing so will invalidate the product's regulatory compliance and its warranty. Product labels and warnings affixed with adhesive or other permanent means must never be removed; doing so will invalidate the product's regulatory compliance and its warranty.

- Risk of explosion:
 - Never use any fuel other than bioethanol liquid. **WARNING!** Do not use spirit or petrol.
 - Only use the type of fuel as specified by the manufacturer.
 - Never use the appliance in areas where flammable vapours or gas may be present.
 - Bioethanol fuel should be stored in a cool, dry cupboard, away from sources of heat or flame. Never store bioethanol within 3 meters of a fireplace, heater, or any other ignition source. If stored outdoors, such as in a garage or garden shed, ensure the container is kept in the shade and away from direct sunlight to prevent overheating.
 - Always store and transport bioethanol fuel in the original container. For bioethanol fuel storage always comply with governmental, health, safety and environmental guidelines. Keep away from ignition sources and ensure proper ventilation.
 - Always observe the local legislation in respect of this product and fuel.
- To prevent damage or surface cracking, do not drop this appliance.
- Beware of hot surfaces. This appliance will become very hot in use, do not touch or move it during operation. Please allow to cool down before touching the product after flame is extinguished.
- Never leave the appliance unattended during operation/when lit.
- Not suitable for continuous operation.
- This appliance must be installed on a secure level base before use.
- Please be sure the wall/table/floor you are placing this appliance can bear its weight.
- Never pour fuel into an open flame or into the burner reservoir unless it has been extinguished and cooled down for at least 15 minutes.
- Do not place any flammable material (including hair and clothing) within 1 metre around the fireplace. A safety distance of at least 2 metres should be kept away from any window or curtain. Any combustible materials to be kept at a safety distance of 3 metres away from the fireplace.
- Do not put anything on top of the appliance.
- Do not use the appliance to heat or boil water or use as a cooking appliance.
- Risk of burns. Do not operate the bioethanol fireplace without completing assembly.
- Due to high surface temperatures, keep away from children and pets.
- Risk of indoor air pollution - Use bioethanol fireplace only in well-ventilated areas and with doors of adjacent room open. Do not obstruct air flow to the burner and do not obstruct the burner in any way or with any material. This includes air slots and rear ventilations. People with breathing problems should consult a physician before using the bioethanol fireplace.
- Do not use more than one appliance per room.
- When burning bioethanol, water-vapour and carbon dioxide are produced.
- Installation only in a location which is protected against cross-aeration/air draft.
- If using inside, use only in a well adequately ventilated room. Do not use in any bathrooms or where sleeping accommodation is provided. The fireplace should not be used in a small room where the room volume is less than 40m³. Room size calculated as per guide.



CARE & USE

- The burner surfaces must be cleaned regularly. Use warm water and washing up liquid.
- Marks can be best removed with a soft cloth and a mixture of lukewarm water and a small amount of ph-neutral cleaning liquid. We recommend cleaning the stainless steel items to prevent contamination.
- **CAUTION!** Never use chemical, steel-wool or scrubbing sponges to clean the fireplace. These can scratch the surface. The manufacturer can not be held responsible for any damages resulting out of false use and/or cleaning of the product.
- When the fireplace is fully extinguished and cooled down, store inside.
- Do not use the product if parts are missing, damaged or worn.
- Only approved spare parts by the manufacturer should be used for this product.

LIGHTING

STEP 1: Remove the burner from the fireplace and remove the extinguish cover from burner. Fill the burner with the bioethanol using a suitable filling device; watch carefully and do not overfill past 'MAX' icon or spill. Then place the fuel container into the base.

- **CAUTION!** Any spilled bioethanol must be immediately removed with an absorbent tissue and cleaned with water to prevent ignition outside the burner reservoir. Check the secondary containment chamber regularly for fuel overspill, and if detected therein the tank shall be emptied (e.g. before each refilling of the fuel tank).
- Fuel must be kept a minimum of 3m from the fireplace. Do not place fuel in front of fireplace.

STEP 2: Use a long match or long nosed lighter to ignite. When igniting keep a safe distance at arm's length.

- **CAUTION!** Fuel will burn low at first: Please allow 10-15 minutes to reach the optimum temperature and flame height.

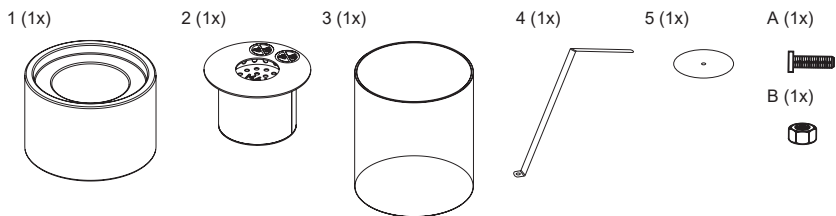
EXTINGUISHING

- **CAUTION!** Never extinguish the flame with water!
- Let the fuel burn out completely if possible. This prevents alcohol left in the burner and deflagration when re-igniting.
- If you wish to extinguish the fire before the fuel has completely burned out, please use the extinguish tool to fully cover the burner hole in a fast but careful motion. This will starve the fuel of oxygen and completely extinguish the flame.
- If the flame is not extinguished immediately, repeat the above instructions until flame is fully extinguished.
- Do not touch the fireplace while burning. Allow at least 15 minutes to cool down before touching the fireplace after flame is extinguished.
- It is urgently recommended that you keep a Class B fire extinguisher at hand close to the device in case of fire.

REFILLING

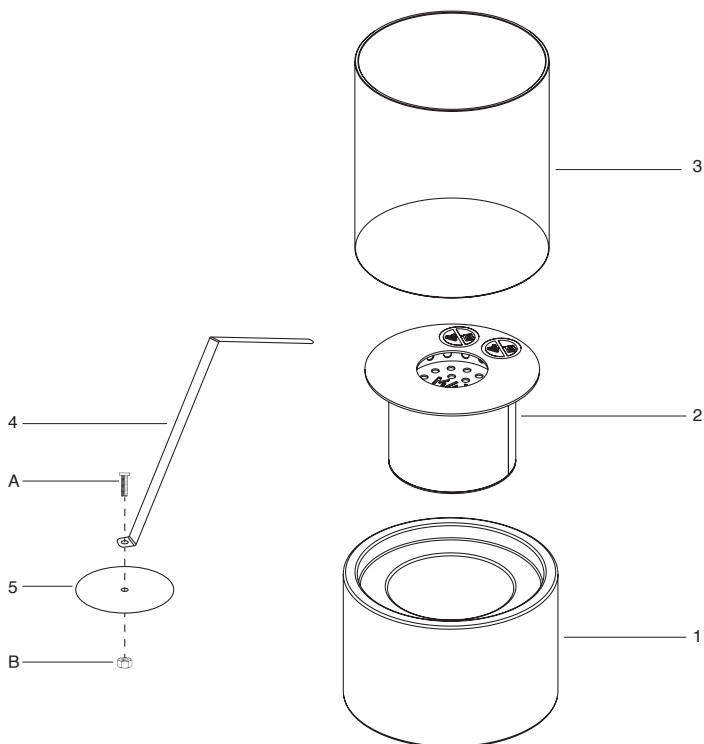
- Allow burner to cool down for at least 15 minutes before refilling and re-igniting.
- **WARNING!** Never refill the burner when the fireplace is operating or still hot. **DO NOT** ignite the appliance if it is in a hot state. Never pour fuel into the burning flame.

Parts List



Prior to assembly, read the instructions carefully. Check all parts against this parts list. Carry out assembly on a soft surface to avoid scratching the paint. Please retain this information for future reference.

Assembly Diagrams



Assembly Instructions

IMPORTANT! - Remove any packaging before use, but retain the safety instructions and store them with this product.

- STEP 1 – Bolt together extinguisher handle (4) to extinguisher cover (5) using bolt (A) and nut (B).
- STEP 2 – Assemble burner by placing fuel container (2) into base (1) and glass cover (3) onto the base.
- STEP 3 – Refer to 'Care and safe use guidelines' before using this product.

The product is now ready to use but please ensure you have read these instructions thoroughly prior to use.

