



Make more of your outdoors

Composite decking from
the timber experts



**MADE IN
BRITAIN** 

Request a free sample at
alchemywpc.co.uk

 **BSW**
A BSW Brand



We bring 17 decades in the timber industry and high-quality, British manufacturing together to create effortless, cost-effective composite decking.

Created from a blend of wood flour and recycled materials, Alchemy is for entertaining, not maintaining. So, once your deck's down, you can concentrate on making the most of it.

Contents

Discover our range of high-enjoyment, hassle-free composite decking for residential and commercial use.

- 04 **habitat+**
- 08 **urban**
- 12 **Installation Information**
- 16 **Fitting Instructions**



habitat+

 **22 x 135 x 3600mm**

Habitat+ is residential decking that's as trustworthy as it is good-looking.

It might seem too good to be true, but sometimes you really can have the best of both worlds.



MADE IN BRITAIN

You've got more important things to worry about when you're outside than oiling or sealing your deck. Things like flipping the burgers and chasing the sun around with your deck chair. So, we created Habitat+ residential decking to be as low-maintenance as possible for maximum outdoor enjoyment.

Habitat+ decking is quick to install with fixing clips, easy to maintain with just a simple brush down and barefoot-friendly with its smooth, splinter-free surface and hidden fixing system.

Dual-faced boards give you the chance to get creative with contemporary colour variations - and they stop indecisive exterior decorators from getting bored. And, with UV stability and colour-matching screws, your deck will always look its best.

Pick your Perfect Shade

The Habitat+ timeless tones are available in a wood-grain or grooved finish.



Bowness



Grizedale



Rydal

The Best Bits

Here are the things that make our Habitat+ range a great choice for your outdoor space:



Low-maintenance



Enhanced wear



15-year UK-based warranty



Quick and easy to install



Recyclable



Colour stability



Hidden fixing system



Easy to clean



Dual-sided



Made in Britain™



Stain resistant surface



Good weathering properties



Colour coded screws



Will not split or rot



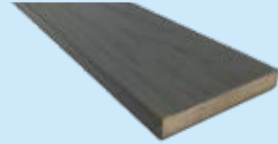
UV stability



Perfect for residential installations*

Trims & Fixings

Hidden fixings, starter clips, skirt trims and colour coded screws are available in individual packs to make your deck as smooth and seamless as possible.



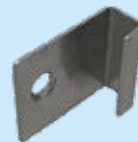
Skirt Trim (15mm x 100mm)

Our skirt trim board perfectly finishes off your Habitat+ deck. Produced in an exact match of our three unique colours, the skirt trim is easily installed around your new decking.



Hidden Fixing Clips

Completely discreet, our hidden fixing clip system means that there are no raised screw heads on your deck, ensuring a barefoot friendly surface for the whole family.



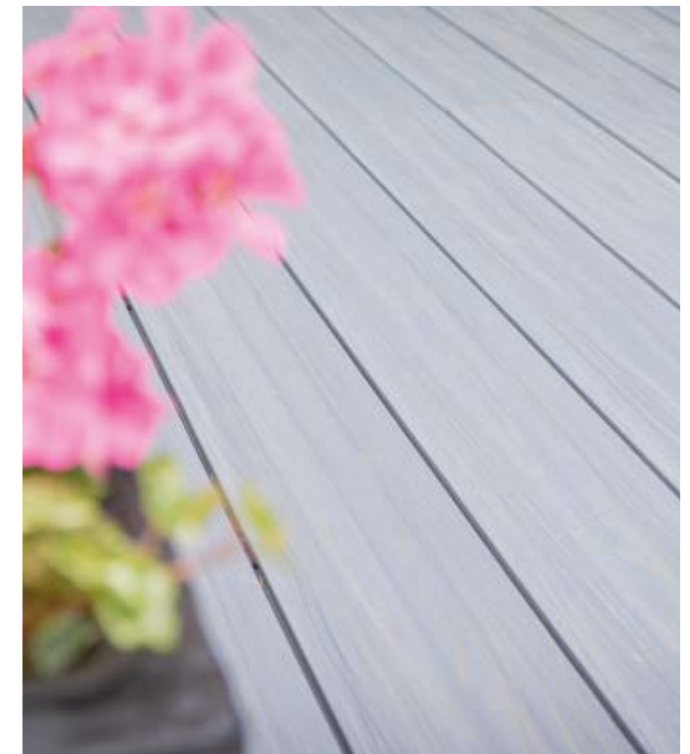
Starter Clips

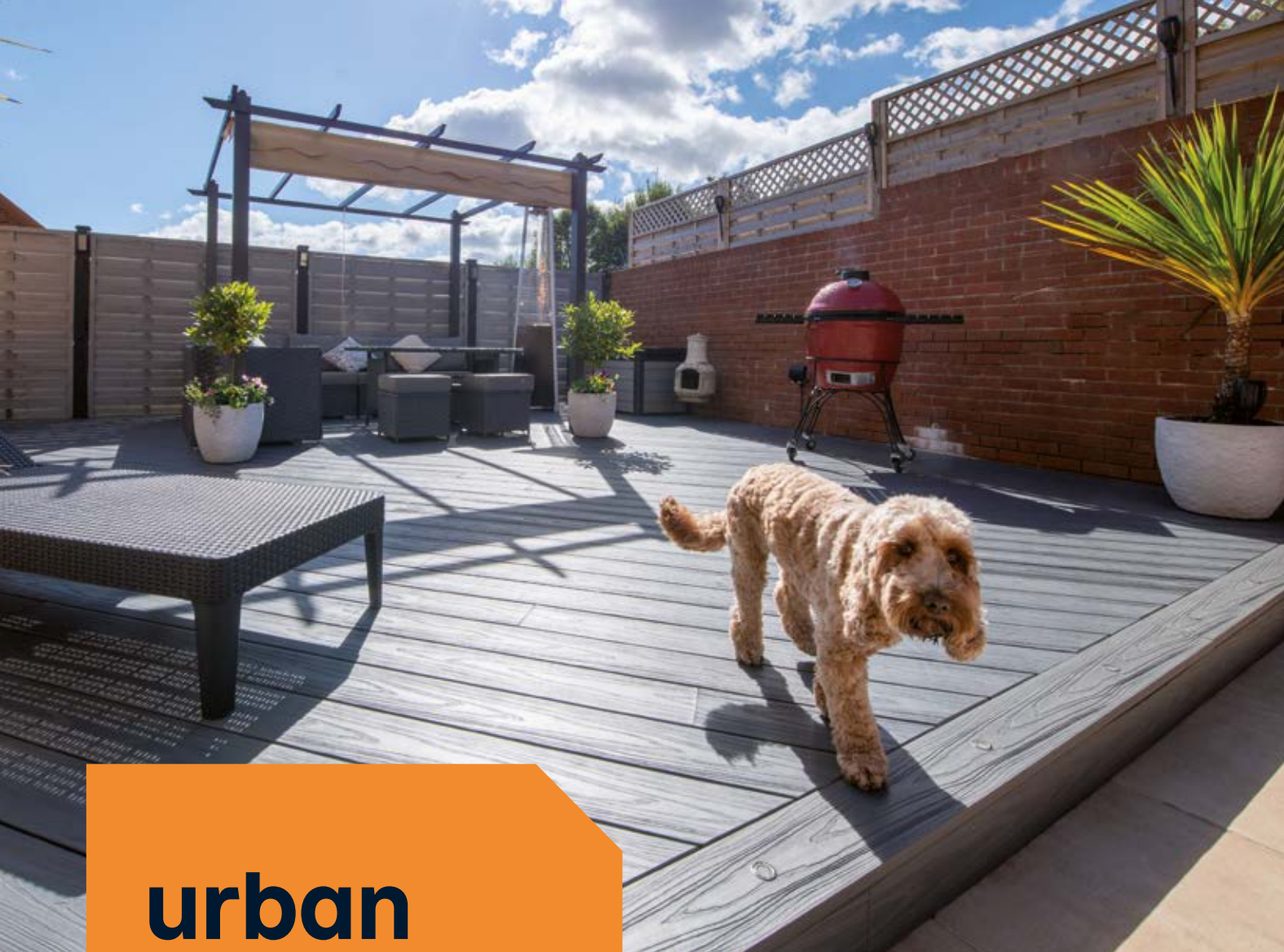
Where it all begins. Our starter clips are used to begin laying your fabulous new deck boards.



Colour Coded Screws

Our colour coded screws come in coordinating shades of grey or brown to ensure a seamless finish to your new decking.





urban

 **22 x 138 x 3600mm**

Making light work of heavy footfall, you can rely on solid decking from Urban - for years to come.

Our resilient decking is perfect for both commercial and residential settings.



MADE IN BRITAIN 

Urban's solid core and specially formulated capping hit the jackpot when it comes to high-performance, peace-of-mind decking. From hotels, bars and restaurants as well as outside any home, our boards can be relied on for core strength - without the sit-ups.

Our simple fixing packs make your deck quick and easy to install, while its low maintenance, stain resistant surface gives you more time to actually enjoy it.

As with all good British things (socks with sandals, a good cuppa and an orderly queue) Urban decking is made and managed right here in the UK with a 20-year warranty * to boot.

Pick your Perfect Shade

The Urban timeless tones are available in a wood grain finish.



Arran



Jura



Mull



The Best Bits

Here are the things that make our Urban range a great choice for your outdoor space:



Low-maintenance



Enhanced wear



20-year UK-based warranty *



Quick and easy to install



Recyclable



Colour stability



Hidden fixing system



Easy to clean



Solid core



Made in Britain™



Stain resistant surface



Good weathering properties



Colour coded screws



Will not split or rot



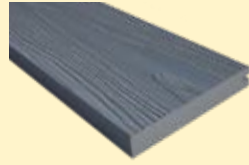
UV stability



Perfect for residential & commercial installations

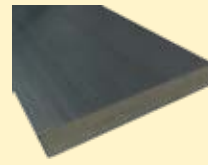
Trims & Fixings

Hidden fixings, starter clips, skirt trims and colour coded screws are available in individual packs to make your deck as smooth and seamless as possible.



Urban Edge Board (22mm x 138mm)

The edge board perfectly completes your new Urban decking. Opt for a perfect match with the rest of your deck boards for a flawless finish or mix things up with a contrasting colourway for a creative look.



Skirt Trim (15mm x 100mm)

Our skirt trim board perfectly finishes off your Urban deck. Produced in an exact match of our three unique colours, the skirt trim is easily installed around the edge of your new decking.



Starter Clips

Where it all begins. Our starter clips are used to begin laying your fabulous new deck boards.



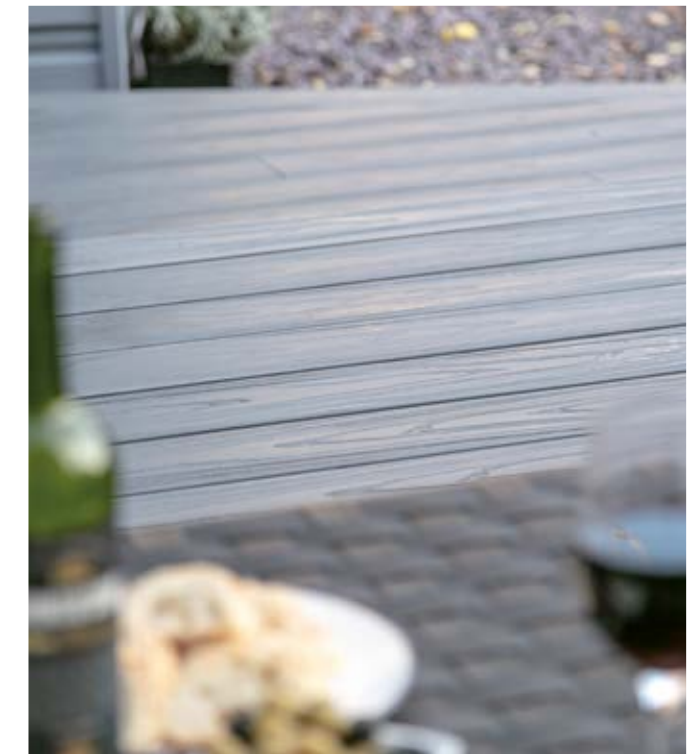
Colour Coded Screws

Our colour coded screws come in coordinating shades of grey or brown to ensure a seamless finish to your new decking.



Hidden Fixing Clips

Completely discreet, our hidden fixing clip system means that there are no raised screw heads on your deck, ensuring a barefoot friendly surface for the whole family.





Find an Accredited Installer



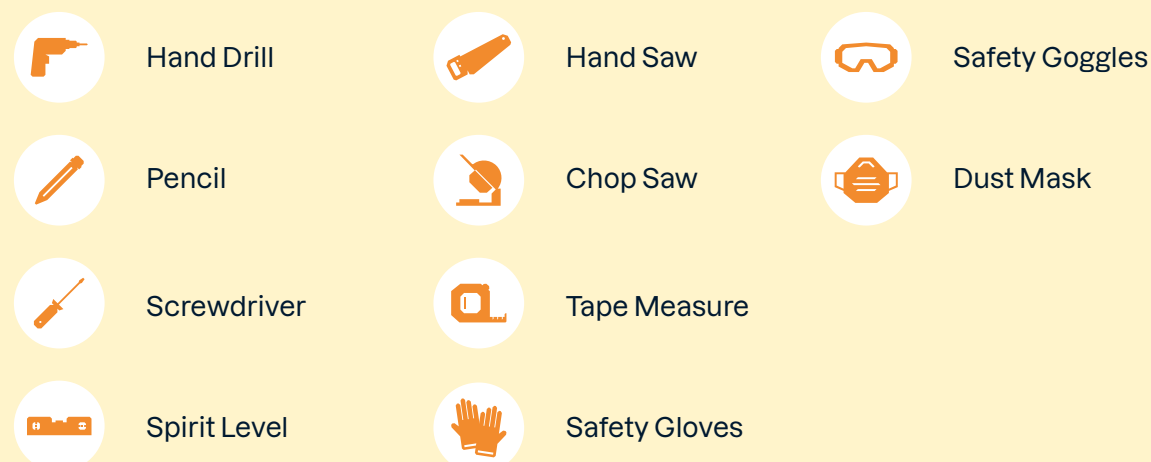
As we're part of BSW Timber, customers who purchase our products are able to access their Accredited Installer members, who will be able to fit your decking with ease.

Accredited Installers have access to training and technical support from a company that has over 170 years of industry experience, so you can be confident that your deck will be fitted safely and securely. All you have to worry about is if you have enough buns for your burgers. For more information and to find an Accredited Installer in your area visit bsw.co.uk/findaninstaller

If you are a landscaper who is interested in joining, visit bsw.co.uk/installers to find out more. The scheme is free to join and gives you access to referrals in your area, dedicated training and an exclusive rewards programme.

The Tools you'll Need for the Job

Don't forget your drill and driver bits!



Decking Calculator

So, you've decided on which product you'd like, chosen your colour and you're ready to get started. But, you're not entirely sure how many boards you'll need to create your deck of dreams.

Well, we can help you with that too. We have a nifty little calculator on our website that will help you work out exactly how much you need, just pop in the details of the area you want to deck and we'll calculate what you need for the job. Simple. Visit alchemywpc.co.uk for more information.

Installation Instructions

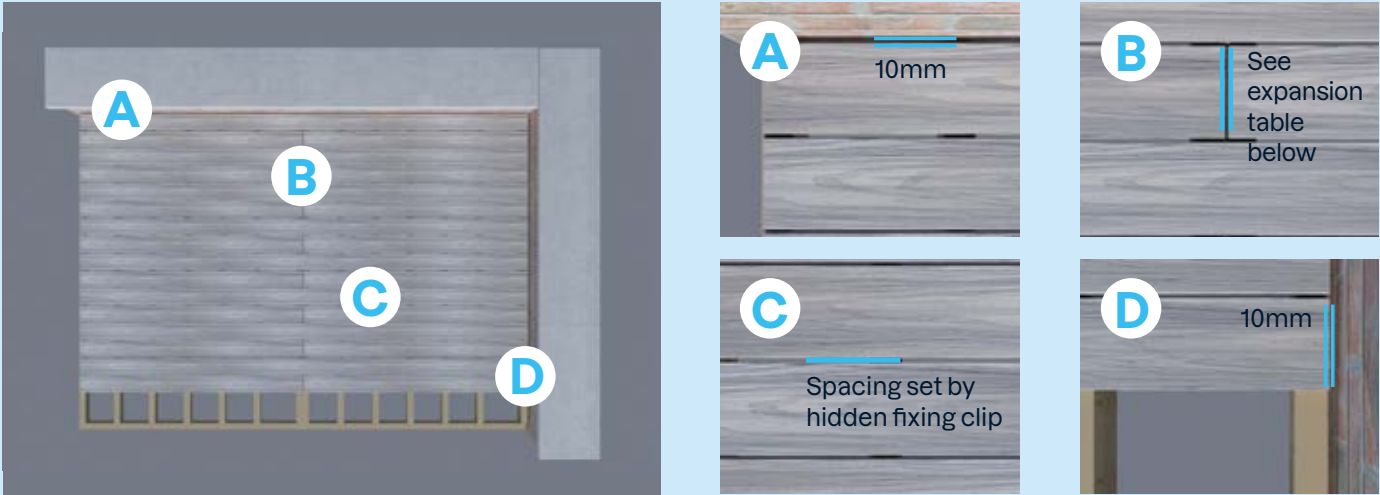
Your lovely new deck will give you years of hassle-free enjoyment simply by following our few key installation guidelines. To get the most out of your alchemy decking, register your warranty at: alchemywpc.co.uk/warranty

A little warning, you must register your warranty within 90 days of buying your Alchemy product in order for this to be valid.

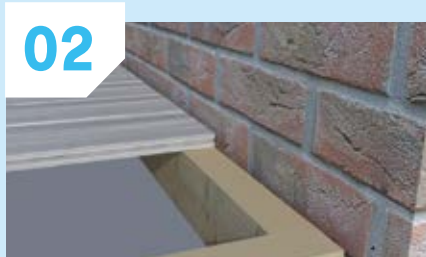
- ⇒ Composite decking is not the same as timber decking and must be treated differently.
- ⇒ Prior to installation all deck boards must be conditioned. The recommended time period for conditioning is 24 hours. Remember that deck boards should be unpacked and laid out side by side on the substructure to condition properly.
- ⇒ Use only the recommended fixings required (starter clips, hidden fixings, screws).
- ⇒ Do not over tighten the fixing screws.
- ⇒ Where deck boards butt up together at the ends, individual hidden fixings must be used for each board (one clip across 2 board ends is not correct).
- ⇒ Always leave an expansion gap at board ends. Refer to the expansion table included within the hidden deck fastener instructions.
- ⇒ The correct maximum span, or less must always be used.
- ⇒ Decked surface must have a minimum 2° slope for surface water drainage.
- ⇒ A minimum of 50mm free air space must be available between the bottom of the deck boards and the ground surface.
- ⇒ Where the deck is installed in a closed area, ventilation to support the required free air flow must be introduced.

Expansion

Some simple spacing rules for Habitat+ and Urban Decking.



01 Ensure an expansion gap at board ends.



02 10mm between the wall and deck board.



03 Skirt trims can be used to finish the deck. Fix with two screws at the recommended centres. Drill pilot holes before screwing.

Expansion Table

Recommended minimum gap in mm between board ends and varying board lengths

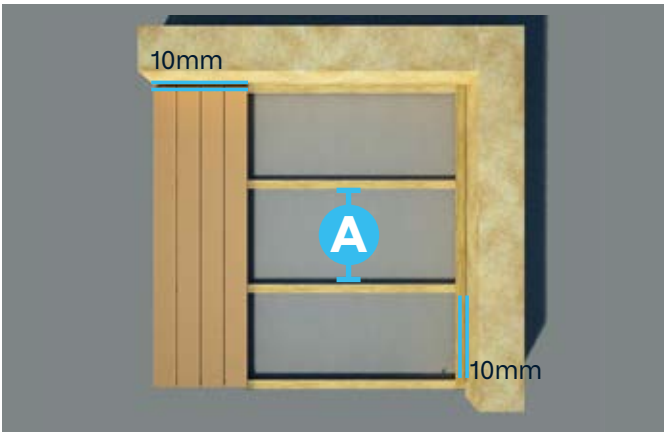
	Air temperature at time of fitting					
	5°	10°	15°	20°	25°	30°
1m Board	5	2	2	2	2	2
2.4m Board	5	4	4	4	4	4
3m Board	5	5	5	4	4	4
3.6m Board	7	7	5	5	4	4

All decking materials exhibit expansion and contraction over a range of temperatures. The table above gives recommended spacing between board ends based on board length and anticipated working temperature range at time of installation.

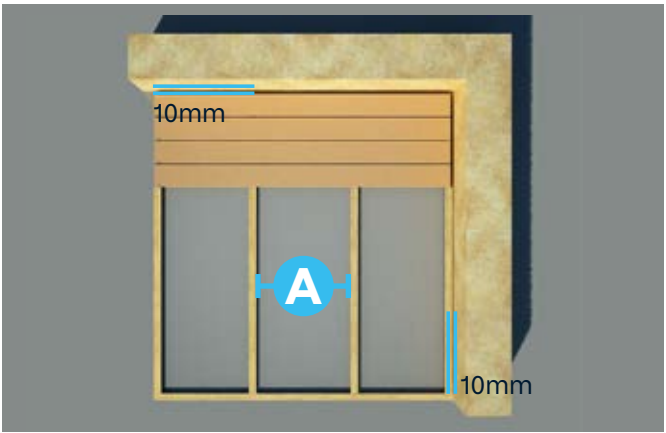
Preparation of Installation

Preparation is key. Here's how to get your Habitat+ and Urban decking ready for installation.

Laying the decking perpendicular to the wall



Choose the decking design required, whether it is vertical, horizontal or the herringbone/chevron design. A min of 50mm free air space must be available between the bottom of the deck boards and the ground surface.



A 400mm max for Habitat+ hollow boards.
400mm max for Urban Residential project
300mm max for Urban Commercial project

Decide which orientation the decking will lay



Joists must be installed no further apart than the recommended centres, and there must also be a joist at both ends of the deck board.



For elevated decks please ensure compliance with Building Regulations regarding structural calculations.

Condition boards prior to use



Prior to installation the deck boards, edge boards and edge skirts must be conditioned. Remove from their packaging and lay side by side 24hrs prior to fitting. Then trim to ensure they are all the same length.

Material Storage and Conditioning

Habitat+ and Urban deck boards should always be stored flat. Prior to fitting, condition all deck boards by laying them side by side on the substructure by 24hrs. Then trim all boards at both ends to ensure all are the same length and cut square. Only install decking in temperatures above 0°C.

Habitat+ Deck Installation

Now for the exciting part! It's time to install your new decking. But before you can relax, stick the BBQ on and - maybe - catch a few rays of sun, there are just 8 simple steps you'll need to follow.



Fix starter clip onto decking joist with screw, allowing first deck board to be installed.

- A Fixing Screw
- B Starter Clip



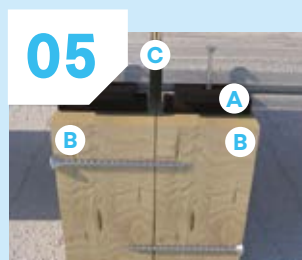
Tilt first deck board so that the leg of the deck locates underneath the lip of the perimeter starter clip.



On every joist, position a hidden fixing clip into the groove of the first board and screw into position but do not tighten.

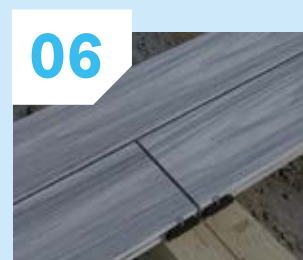


Slide the next deck board into position, locating the hidden fixing clip into its groove. This will set the gap between each deck board. Tighten the hidden fixing clip - but do not over tighten, use a low speed high torque setting on your electric screwdriver. Duplicate this step for every additional board.

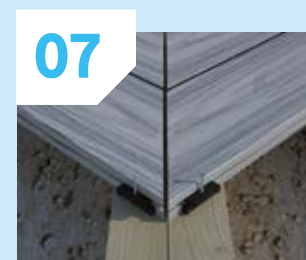


DO NOT over tighten the hidden fixing clip.

- A Fixing Clips
- B Joist
- C See expansion table



Where board ends meet allow an expansion gap (see expansion table) fit a second supporting noggin and fit a hidden fixing clip at the end of each board.



When fitting two boards at 90° ensure a minimum expansion gap of 5mm where the boards meet. Ensure hidden fixing clips are used at both board ends.



The starter clip is also used as a finishing clip. Install the starter clip to the end of the last joint, slide the deck board between the last clip and the finishing clip.

Completing your Habitat+ Deck

Nearly there! Just some final finishing touches. Completing your Habitat+ deck is as easy as 1, 2, 3. We can practically hear the sausages starting to sizzle...



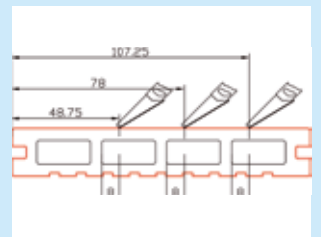
Two pilot holes should be drilled at every joist, leaving a gap of at least 50mm from both the beginning and the end of the trim.



Fix the Habitat+ skirt trim the over Habitat+ deck board edges at the joist ends. Leave a 50mm gap between ground and the trim to aid airflow.



Use a colour coded screw for each of the pre-drilled holes.



When finishing a deck, an "odd sized" deck board may be required, cut the deck board to fit. You must allow the 8mm overhang in order to locate fully within the starter clip.



Urban Deck Installation

It's time for your Urban decking to be brought to life. But just before you prepare the sun lounger and whip up your famous potato salad, there are 8 simple steps you'll need to follow.



Fix starter clip onto decking joist with screw, allowing first deck board to be installed.

- A Fixing Screw
- B Starter Clip



Tilt first deck board so that the leg of the deck locates underneath the lip of the perimeter starter clip.



On every joist, position a hidden fixing clip into the groove of the first board and screw into position but do not tighten.



Slide the next deck board into position, locating the hidden fixing clip into its groove. This will set the gap between each deck board. Tighten the hidden fixing clip - but do not over tighten, use a low speed high torque setting on your electric screwdriver. Duplicate this step for every additional board.

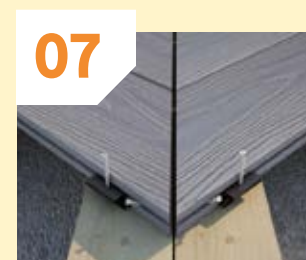


DO NOT over tighten the hidden fixing clip.

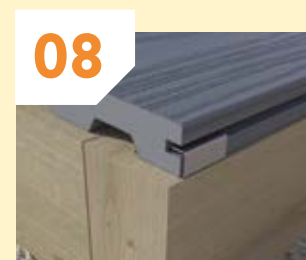
- A Fixing Clips
- B Joist
- C See expansion table



Where board ends meet allow an expansion gap (see expansion table) fit a second supporting noggin and fit a hidden fixing clip at the end of each board.



When fitting two boards at 90° ensure a minimum expansion gap of 5mm where the boards meet. Ensure hidden fixing clips are used at both board ends.



The starter clip can also be used as a finishing clip. Install the starter clip to the end of the last joint, slide the deck board between the last clip and the finishing clip.

Completing your Urban Deck

Great, you've come this far. The end is nigh and the burgers are in sight! Here are the finishing touches to complete your long-lasting Urban deck.



Always use the recommended hidden fixing clips. At the end of the run, an Urban edge board can be used. Fix using a hidden fixing clip and don't over tighten then face fix this board only, using the colour coded screws.



When using the colour coded screws, pre-drill pilot holes first, using a 2mm drill. Ensure pilot holes are no less than 25mm from each edge. Edge boards should overhang the joist by 15mm to cloak the Urban skirting if being used.



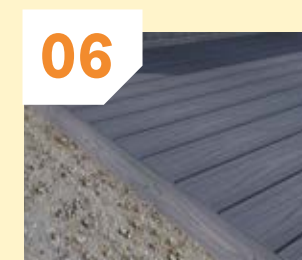
Ensure the colour coded screws are screwed into the pilot holes at 90° with two screws at every joist. Once screwed in place, the head should be flush with the deck surface.



Ensure the Urban deck boards are cut square (see note on conditioning). All board ends should be cut 10mm back from the joist edge when using an Urban skirt trim.



When fitting an Urban skirt trim colour coded screws must be used.



Use two colour coded screws at every joist.



When using an Urban skirt trim across deck board ends, ensure the square edge is in line with the top surface of the Urban deck boards, check there is a 10mm gap between board ends and the vertical edge board.



Fix Urban skirt trim underneath the Urban edge board at the joist ends using pilot holes as before. Leave a 50mm gap between ground and the Urban skirt trim to aid airflow. Use two colour coded screws at every joist.



 0800 587 8887  hello@alchemywpc.co.uk
 alchemywpc.co.uk

**MADE IN
BRITAIN** 

