

BRISTAN

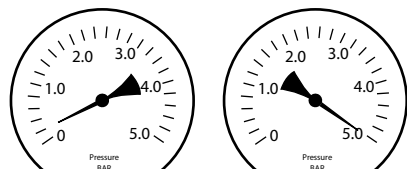
Installation Instructions & User Guide

Please leave these instructions
with the end user

Product Code: RND KIT01 BLK (D1)

Specifications

Working Pressure Range



Min: 0.2 bar

Max: 5.0 bar

Maximum Static Pressure: 10.0 bar

Tools You'll Need



Pencil



Safety Goggles



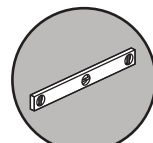
Electronic Detector



6mm Drill



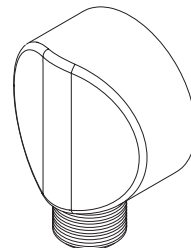
Cross head
Screwdriver



Spirit Level

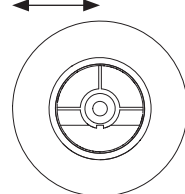
Inlet Connections

1/2" BSP



Bracket Centres

30mm



Prior to Installation

All products manufactured and supplied by Bristan are safe to use provided that they are installed, operated and receive regular maintenance in accordance with these instructions.

This product needs to be installed in accordance with, and meet the requirements of the Water Supply (Water Fittings) Regulations 1999 and current by-laws. For full Installation Requirements & Notes (IRN) please visit wras.co.uk/directory.

This product must not be modified in any way as this will invalidate the guarantee.

Full access must be made available for future maintenance/servicing purposes.

Before drilling into walls, check that there are no hidden electrical wires, cables or water supply pipes. This can be checked with the aid of an electronic detector.

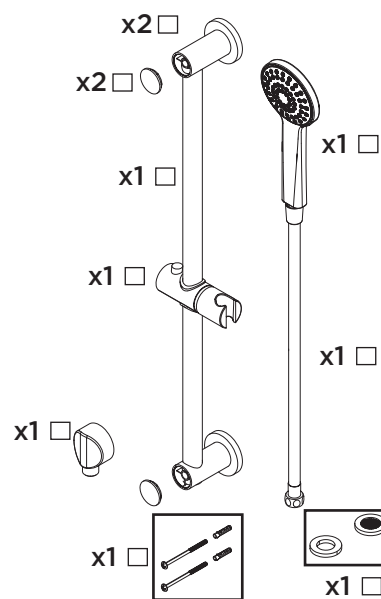
If power tools are used do not forget to:

- Wear eye protection
- Unplug equipment after use

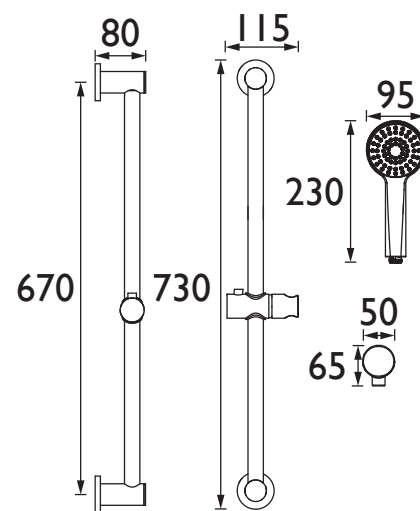
If in doubt, contact a registered plumber or your Local Water Authority or the Secretary of the Institute of Plumbing, address as follows:-

The Institute of Plumbing,
64 Station Lane,
Hornchurch,
Essex,
RM12 6NB, Tel: 01708 472791

Pack Contents



Dimensions (mm)



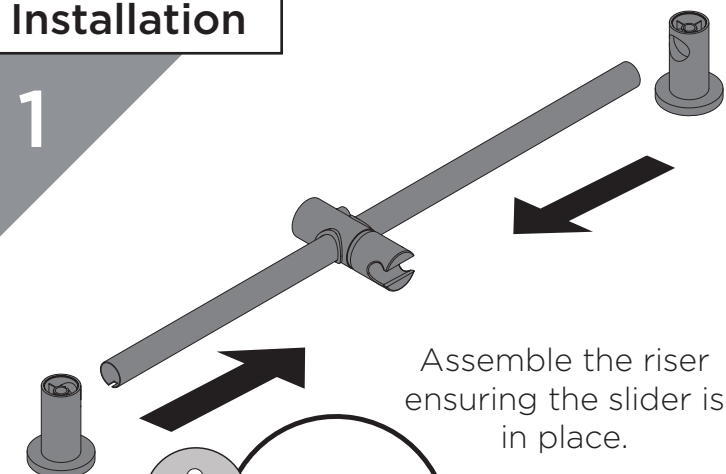
Spare Parts

To replace any spare parts
for your tap, why not
scan the QR Code or
visit www.bristan.com
and search for your product.

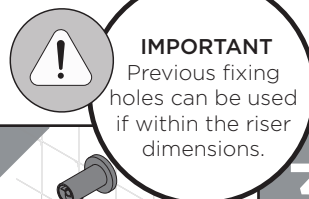


Installation

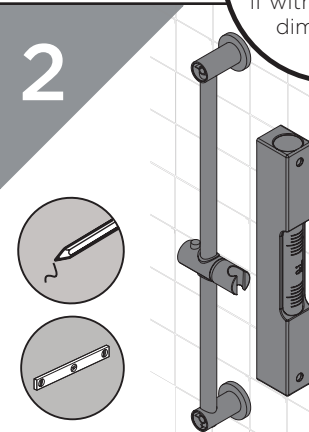
1



Assemble the riser
ensuring the slider is
in place.

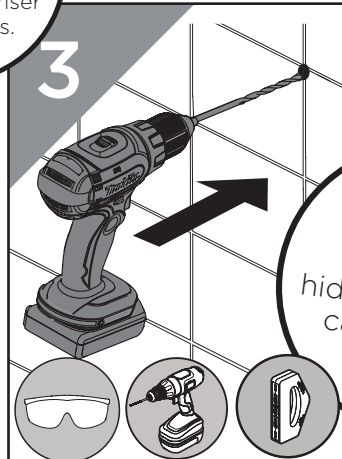


2

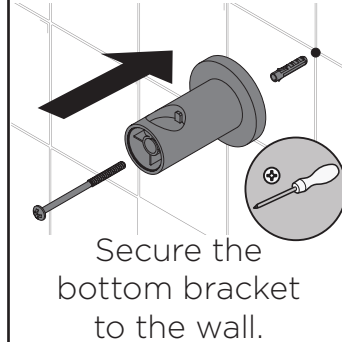


Using a spirit level
to ensure the riser is
positioned correctly
and perpendicular
to the wall, use the
assembled riser to
mark the desired
position of the
brackets and wall
fixings. Make sure to
accommodate for
all user heights.

3

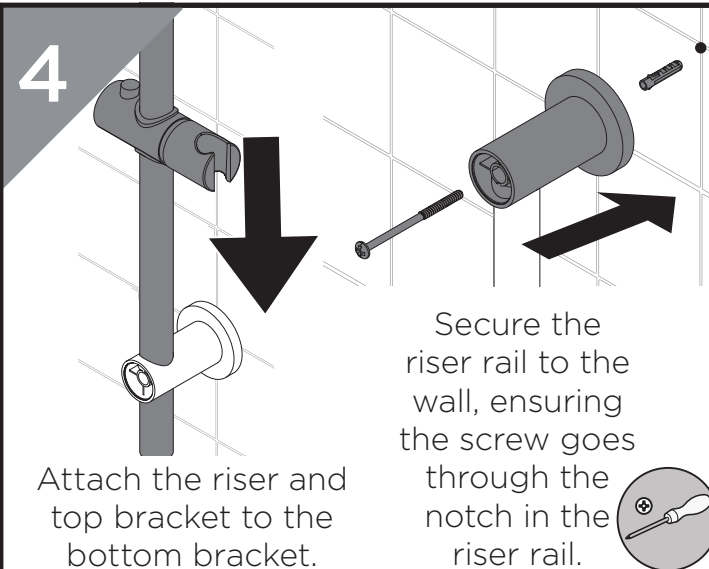


Drill the screw holes.



Secure the
bottom bracket
to the wall.

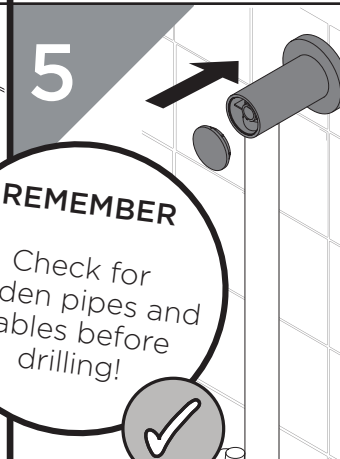
4



Attach the riser and
top bracket to the
bottom bracket.

Secure the
riser rail to the
wall, ensuring
the screw goes
through the
notch in the
riser rail.

5

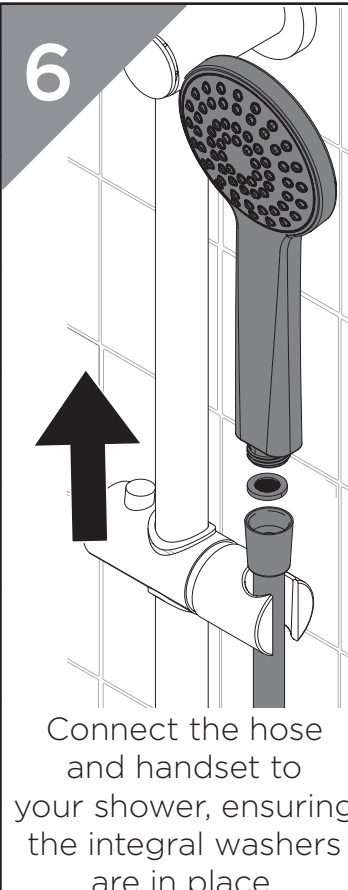


REMEMBER

Check for
hidden pipes and
cables before
drilling!

Place the
caps on
to the
riser rail.

6



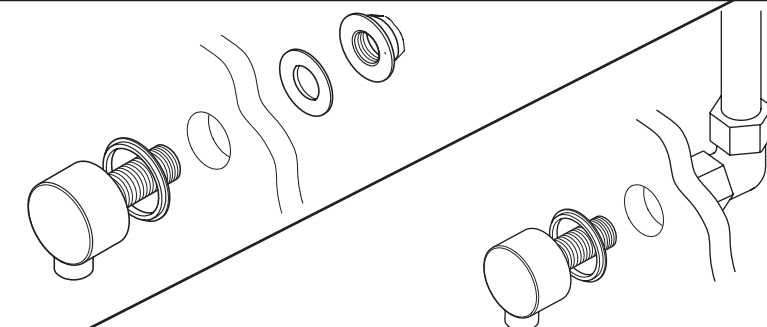
Connect the hose
and handset to
your shower, ensuring
the integral washers
are in place.

Wall Outlet Installation

With rear access

Choose the location for the wall outlet
and create a 25-30mm hole in the wall.
Ensure your shower accessories have
enough reach from that position.
Finish the wall surface.

Fit the wall outlet, ensuring the
washers are fitted either side
of the wall (not supplied).

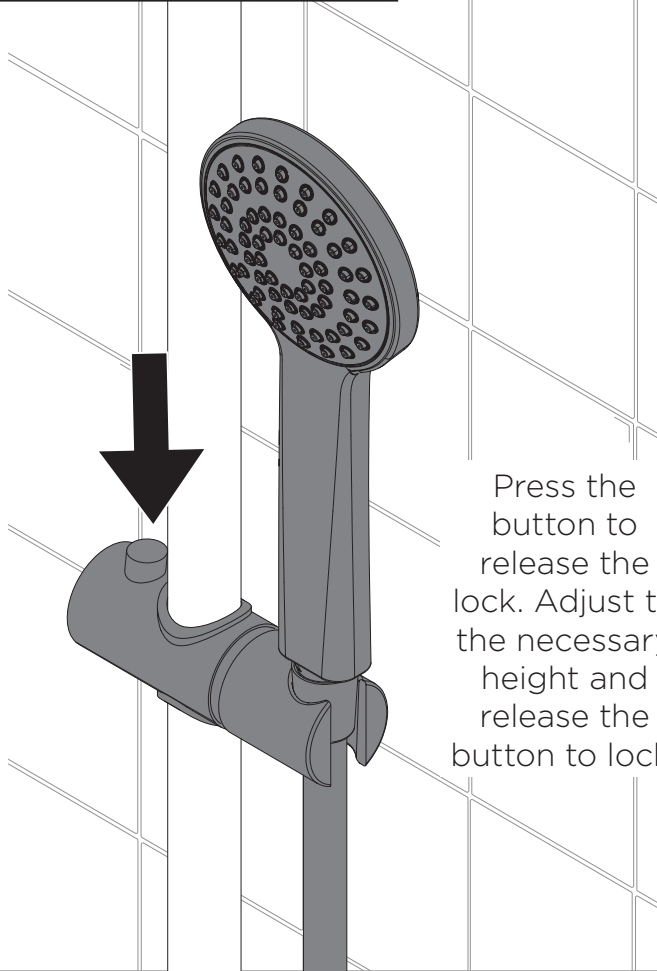


Without rear access

Choose the location for the wall
outlet and create a 25-30mm hole
in the wall, fitting a 1/2" female
connection at the hole in the wall
(not supplied).

Screw the wall outlet into
the 1/2" female connection,
using a suitable thread sealant
ensuring the rubber seal is fitted
to the back of the wall outlet.

Operation



Press the button to release the lock. Adjust to the necessary height and release the button to lock.

General Cleaning

Bristan products are made from premium materials, with hand polished, PVD, EPD or electroplated finishes.

Your shower kit should be regularly cleaned with warm water, a mild pH-neutral liquid soap, and polished with a soft cloth. Any residues from soap, toothpaste, shampoos and shower gels can cause blemishes if not rinsed off straight after use.

Household bleaches and cleaners contain harsh chemicals and may damage the surface finish. Avoid using abrasive cloths, scouring pads, scrub sponges, steel wool or anything similar.

Your Bristan handset has a rub-clean pad for easy cleaning. Simply rub your fingers across the rubber spray jets regularly before you turn the shower on to remove any scale or debris.

Notes

Please use this space for any notes you or your installer may have regarding the installation/plumbing of this product.

Contact Us

BRISTAN

Bristan Group Ltd.

UK: Bristan Group, B78 1SG.
EU: Masco Europe S.à.r.l.
14 Rue Strachen
6933 Mensdorf
Luxembourg

Customer Service: +44330 026 6273
Web: www.bristan.com
Email: enquire@bristan.com

A Masco Company

Notes

Our Guarantee

At Bristan, we want to make things as easy as possible for our customers. That's why we offer solid guarantees on all our products, effective from the date of purchase, to give you peace of mind.

To start your free guarantee simply scan the QR code and register your product. Alternatively visit www.bristan.com/register.

For any other queries, please call our Customer Service on 0330 026 6273 where our expert team of advisors will be able to offer you any help and advice.

For full guarantee terms and conditions visit www.bristan.com/service-centre/guarantees.

