

# BRISTAN

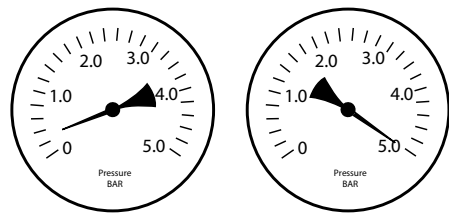
## Installation Instructions & User Guide

Please leave these instructions  
with the end user

Product Code: FH SLRD01 BLK (D1)

### Specifications

Dynamic Water Pressure (bar)

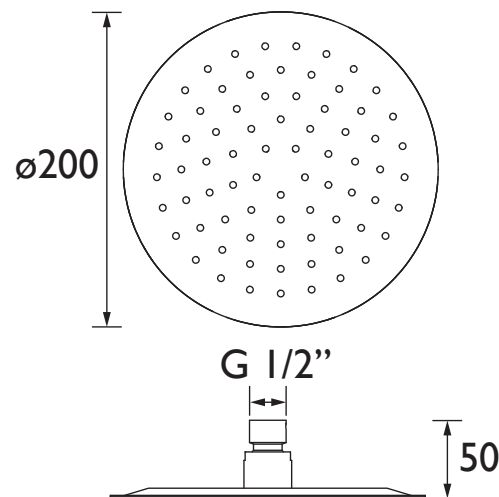


Min: 0.2

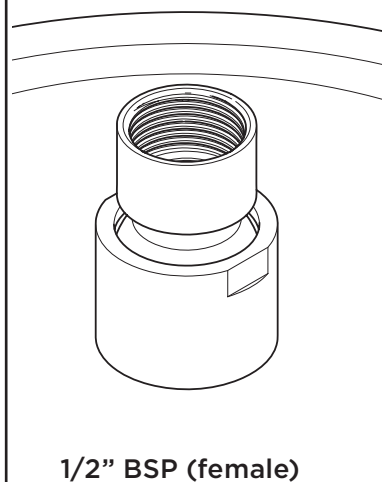
Max: 5.0

Maximum Static Pressure: 10.0

### Dimensions (mm)



### Inlet Connections



### Prior to Installation

All products manufactured and supplied by Bristan are safe to use provided that they are installed, operated and receive regular maintenance in accordance with these instructions.

This product needs to be installed in accordance with, and meet the requirements of the Water Supply (Water Fittings) Regulations 1999 and current by-laws. For full Installation Requirements & Notes (IRN) please visit [wras.co.uk/directory](http://wras.co.uk/directory).

Full access must be made available for future maintenance/servicing purposes.

This product must not be modified in any way as this will invalidate the guarantee.

Before drilling into walls, check that there are no hidden electrical wires, cables or water supply pipes. This can be checked with the aid of an electronic detector.

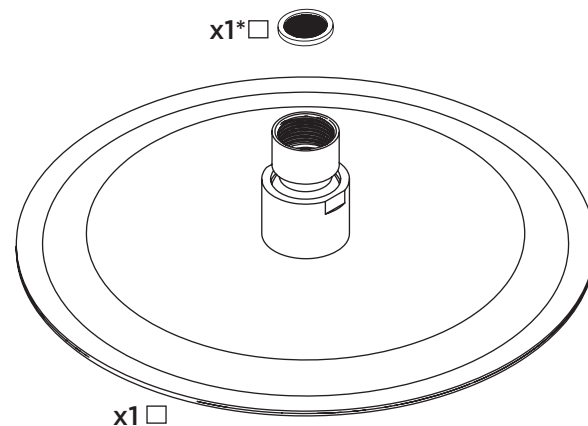
If power tools are used do not forget to:

- Wear eye protection
- Unplug equipment after use

If in doubt, contact a registered plumber, your Local Water Authority or the Secretary of the Institute of Plumbing, address as follows:-

The Institute of Plumbing,  
64 Station Lane,  
Hornchurch,  
Essex,  
RM12 6NB, Tel: 01708 472791

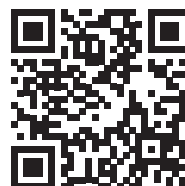
### Pack Contents



\* Pre-fitted inside the fixed head

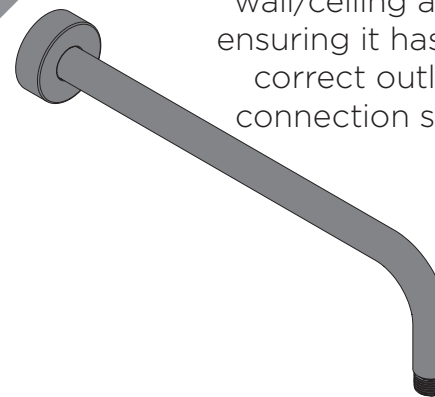
### Spare Parts

To replace any spare parts  
for your tap, why not  
scan the QR Code or  
visit [www.bristan.com](http://www.bristan.com)  
and search for your product.



### Installation

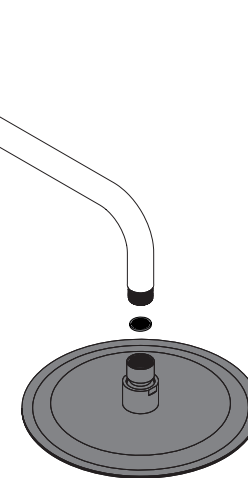
1



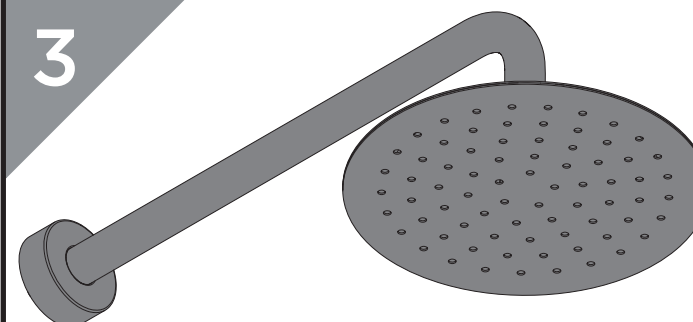
Install your desired  
wall/ceiling arm,  
ensuring it has the  
correct outlet  
connection size.

2

Screw the fixed  
head on to your wall/  
ceiling arm by hand.  
**DO NOT  
OVERTIGHTEN.**  
Ensure the pre-fitted  
filter washer is in place.

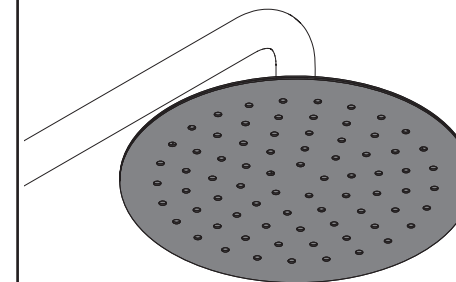


3



Turn on the water supplies and let the water  
flow for a few minutes to check all joints  
and connections for any leaks.

### Operation



Your fixed head  
comes with a ball  
joint to enable  
you to change  
the angle of  
the shower.  
By holding  
the sides of the  
fixed head, you  
can tilt to the  
desired position.

### General Cleaning

Bristan products are made from premium  
materials, with hand polished, PVD, EPD  
or electroplated finishes.

Your product should be regularly cleaned with  
warm water, a mild pH-neutral liquid soap, and  
polished with a soft cloth. Any residues from  
soap, toiletries etc. should be rinsed off straight  
after use.

Household bleaches and cleaners contain harsh  
chemicals and may damage the surface finish.  
Avoid using abrasive cloths, scouring pads, scrub  
sponges, steel wool or anything similar.

Some surfaces such as nickel and pewter may  
be affected by the dye found in some cloths,  
so it is also important to avoid leaving cloths  
on surfaces.

### Contact Us

## BRISTAN

Bristan Group Ltd.

**UK:** Bristan Group, B78 1SG.  
**EU:** Masco Europe S.à.r.l.  
14 Rue Strachen  
6933 Mensdorf  
Luxembourg

**Customer Service:** +44330 026 6273  
**Web:** [www.bristan.com](http://www.bristan.com)  
**Email:** [enquire@bristan.com](mailto:enquire@bristan.com)

A Masco Company

### Our Guarantee

At Bristan, we want to make things as easy as possible for our customers. That's why we offer solid guarantees on all our products, effective from the date of purchase, to give you peace of mind.

To start your free guarantee simply scan the QR code and register your product.  
Alternatively visit [www.bristan.com/register](http://www.bristan.com/register).

For any other queries, please call our Customer Service on 0330 026 6273 where our expert team of advisors will be able to offer you any help and advice.

For full guarantee terms and conditions visit [www.bristan.com/service-centre/guarantees](http://www.bristan.com/service-centre/guarantees).

